

Supplementary material, File S1. Primary type data and images of specimens in the Spencer Entomological Collection (UBCZ).

COLEOPTERA

Anobiidae

Oligomerus crestonensis. Hatch 1961: UWPB, 16: 316. [Fig. 2M] Type ♂. Labels: “Creston, B.C. 4.viii.1950 G. Stace Smith”; “Ex. *Corylus californica* 2000 ft.”; “?n. sp. near 12686 HB Leech 19.xi.1950”; “*Oligomerus obtusus* LeC. M. Hatch-1957 check type”; “*Oligomerus crestonensis* Hatch”; “Type ♂ *Oligomerus crestonensis* 1958-M. Hatch”; “Ex. G. Stace Smith collection purchased 1960”; “HOL-0045”; “COL-16652”.



Byrrhidae

Byrrhus caribooensis. Hatch 1962: UWPB, 16: 298. [Fig. 2F] Type ♂. Labels: “G. Stace Smith 28.v.1932”; “Mile 150 Cariboo Rd. B.C.”; “Det. 9884 K.W. Cooper 1933”; “TYPE ♂ *Byrrhus caribooensis* 1957- M.H. Hatch”; “*Byrrhus caribooensis* Hatch”; “*Byrrhus cyclophorus* Kirby P.J. Johnson 1987”; “HOL-0038”; “COL-16645” [Current status: junior synonym of *Byrrhus cyclophorus* Kirby (Johnson 1993)].



Cantharidae

Malthodes stacesmithi. Fender 1954: Pan-Pacific Entomologist, 30: 131–132. [Fig 2D] Holotype. Labels: “Barkerville, B.C. 12.viii.1950 G. Stace Smith” ; “*Malthodes stacesmithi* Fender HOLOTYPE” ; “Ex. G. Stace Smith collection purchased 1960” ; “*Malthodes stacesmithi* Fender” ; “HOL-0036” ; “COL-16643”.



Carabidae

Bembidion gordonii. Lindroth 1963: *Opuscula Entomologica, Supplementum*, XXIV: 284–286. [Fig. 1A] Holotype ♂. Labels: “Kitchener 15.viii.1955 B.C. G. Stace Smith”; “Goat R. shore”; “♂”; “see letter”; “Det. 499? C.A. Frost 6.x.1956”; “*gordonii* C.H. Lindroth 1958”; “*Holotypus gordonii* Lth.”; “HOL-0001”; “COL-16608”.



Chrysomelidae

Chalcoides sculpturata. Lazorko 1974: Entomologische Blätter für Biologie und Systematik der Käfer, 70: 149. [Fig. 2P] Holotype ♂. Labels: “Creston, B.C. 29.v.1949 G. Stace Smith” ; “Host *Salix exigua*” ; “Ex. G. Stace Smith collection purchased 1960” ; “*Chalcoides fulvicornis sculpturata* Laz. det. W. Lazorko 1973” ; “HOLOTYPUS *Chalcoides fulvicornis sculpturata* Laz. 1973” ; “*Chalcoides fulvicornis sculpturata* Laz. W.V.” ; “HOL-0048” ; “COL-16655” [current combination *Crepidodera sculpturata* (Lazorko)].

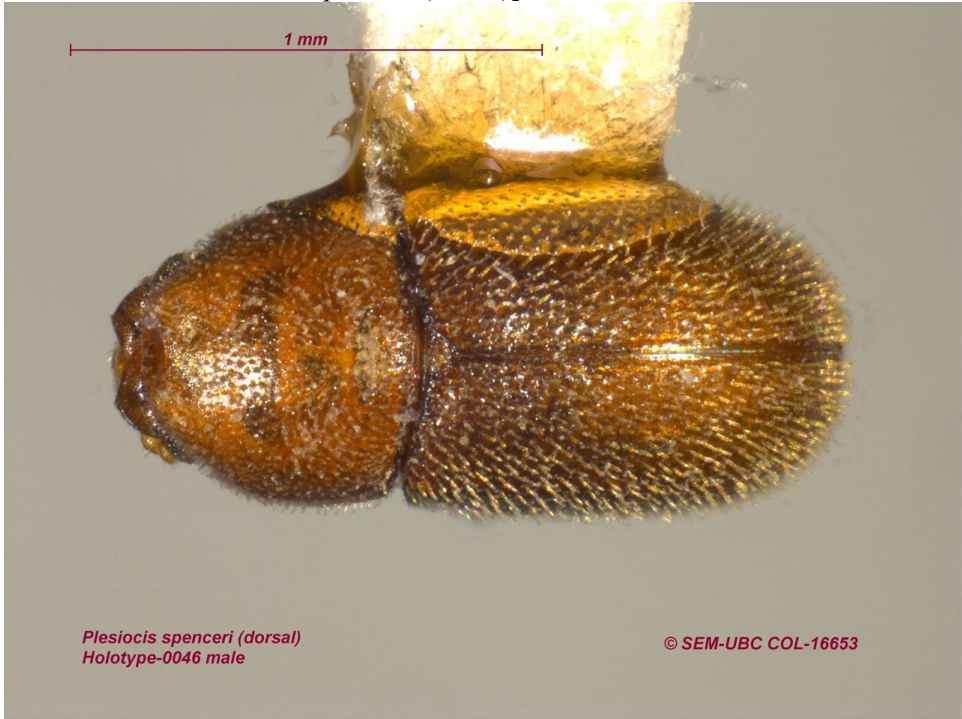


C. sculpturata. Lazorko 1974. [Fig. 2Q] Allotype ♀. Labels: “Creston, B.C.13.vi.1952 G. Stace Smith”; “Ex. *Salix exigua*”; “♀”; “Ex. G. Stace Smith collection purchased 1960”; “Host *Salix exigua*”; “ALLOTYPUS *Chalcoides fulvicornis sculpturata* Laz. 1973”; “HOL-0049”; “COL-16656” [current combination *Crepidodera sculpturata* (Lazorko)].



Ciidae

Plesiocis spenceri. Hatch 1962: UWPB, 16: 233. [Fig. 2N] Type ♂. Labels: “Vancouver, B.C. Feb 1925 G.J. Spencer” ; “ex. *Polyporus volvata* – museum” ; “TYPE ♂ *Plesiocis spenceri* 1957-M. Hatch” ; “Ex. G. Stace Smith collection purchased 1960” ; “HOL- 0046” ; “COL-16653” [current combination *Ennearthron spenceri* (Hatch)].



P. spenceri. Hatch 1962. [Fig. 20] Allotype ♀. Labels: “Vancouver, B.C. Feb 1925 G.J. Spencer”; “ex. *Polyporus volvata* – museum”; “ALLOTYPED ♀ *Plesiocis spenceri* 1957-M. Hatch”; “Ex. G. Stace Smith collection purchased 1960”; “HOL-0047”; “COL-16654” [current combination *Ennearthron spenceri* (Hatch)].



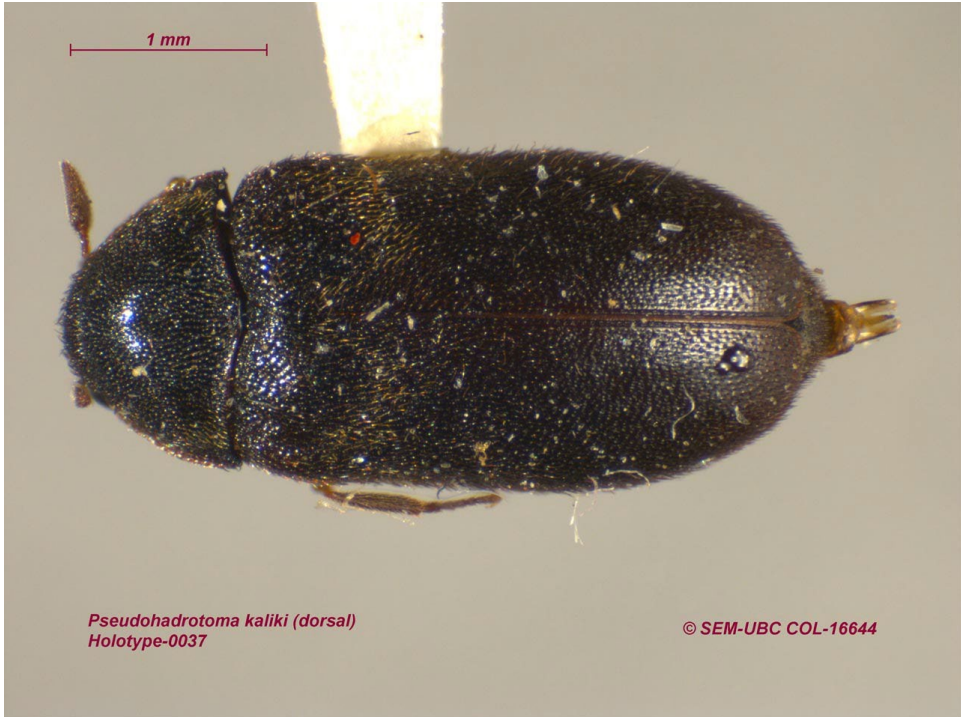
Cryptophagidae

Atomaria melanica. Hatch 1962: UWPB, 16: 220. [Fig. 2H] Type. Labels: “Barkerville, B.C. 23.ix.1952 G. Stace Smith” ; “Evening flight 4300 Ft.” ; “TYPE *Atomaria melanica* 1957-M. Hatch” ; “*Atomaria melanica* Hatch” ; “*Atomaria* (*s. str.*) *atrata* Reitter det. C. Johnson 2006 (= *melanica* Hatch)” ; “HOL-0040” ; “COL-16647”.



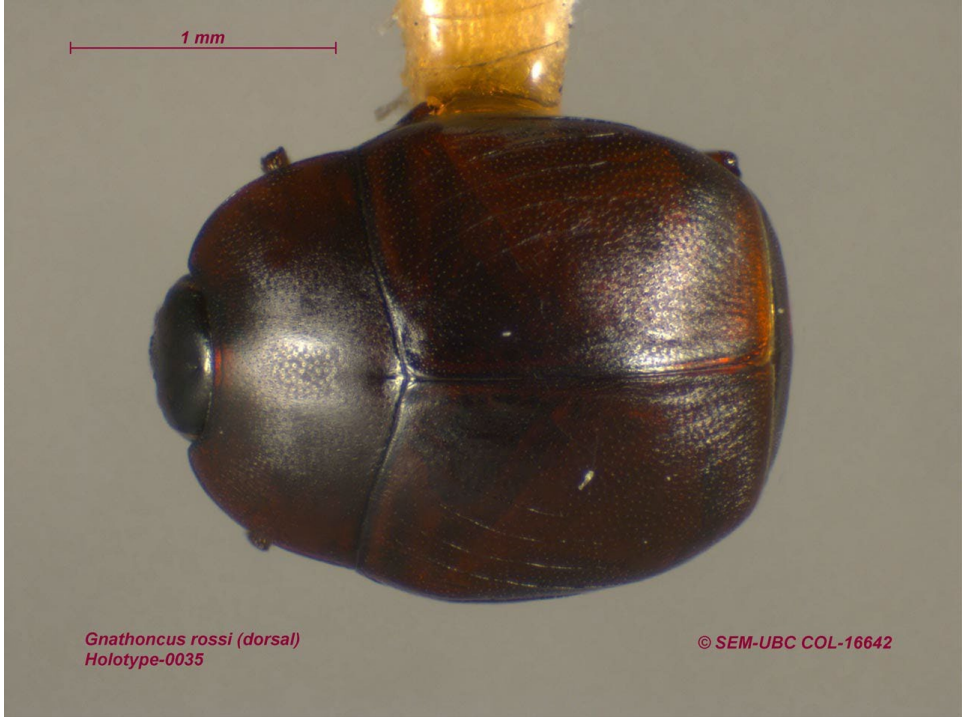
Dermestidae

Pseudohadrotoma kaliki. Beal 1967: Miscellaneous Publications of Entomologica Americana, 5/6: 294–296. [Fig. 2E] Holotype ♂. Labels: “Creston, B.C. 30.vi.1948 G. Stace Smith” ; “on flowers, *Philadelphus lewisii*” ; “HOLOTYPE ♂ *Pseudohadrotoma kaliki* R.S. Beal” ; “*Pseudohadrotoma kaliki* Beal” ; “HOL-0037” ; “COL-16644”.



Histeridae

Gnathoncus rossi. Hatch 1962: UWPB, 16: 266. [Fig. 2C] Type. Labels: “Creston, B.C. 17.vi.1950 G. Stace Smith”; “Ex. rotten wood with ants”; “Ex. G. Stace Smith collection purchased 1960”; “TYPE *Gnathoncus rossi* 1959-M. Hatch”; “*Gnathoncus rossi* Hatch”; “UBC”; “HOL-0035”; “COL-16642”.



Leiodidae

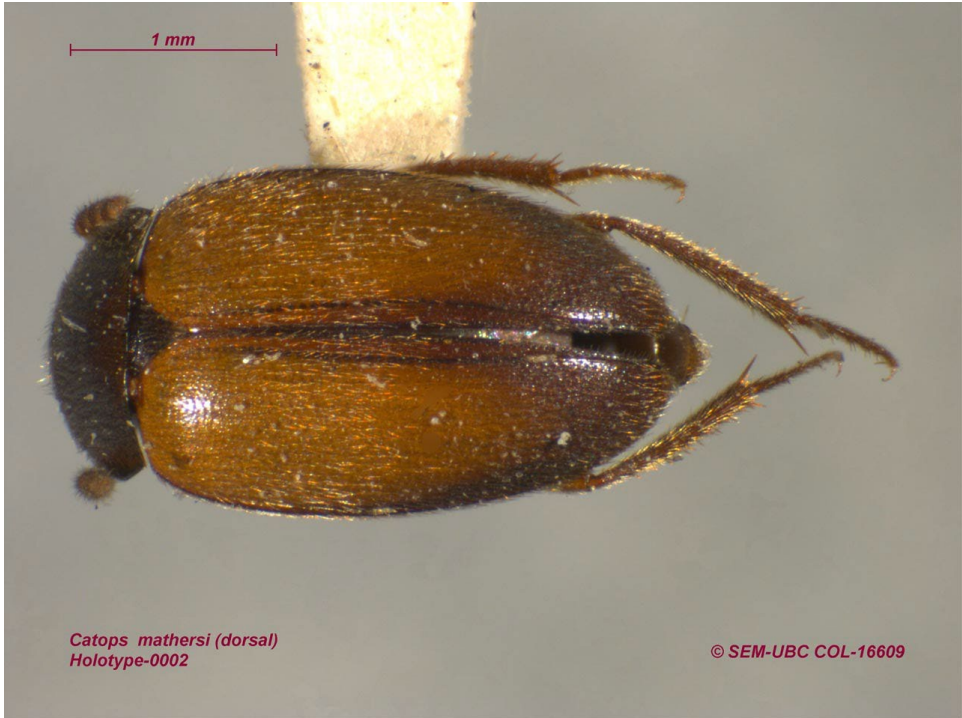
Agathidium obtusum. Hatch 1957: UWPB, 16: 36. [Fig. 2AF] Type ♂. Labels: “Creston, B.C. 29.iii.1949 G. Stace Smith”; “under bark”; “Del 1954 A. virile GT. H Houk”; “*Agathidium* (s. str.) *virile* Fall ♂ M. Hatch 1954”; “Ex. G. Stace Smith collection purchased 1960”; “*Agathidium obtusum* Hatch”; “Type ♂ (s. str.) *obtusum* 1955-M.H. Hatch”; “HOL-0077”; “COL-21222” [synonym of *Agathidium conjunctum* Brown].



Agathidium obtusum (dorsal)
Holotype-0077 male

© SEM-UBC COL-20222

Catops mathersi. Hatch 1957: UWPB, 16: 45. [Fig. 1B] Type ♂. Labels: “Stanley B.C.”; “vii.20.1929 W.G. Mathers”; “Type ♂ *Catops mathersi* 1954-M. Hatch”; “HOL-0002”; “COL-16609”.



C. mathersi. Hatch 1957. [Fig. 3C] Allotype ♀. Labels: “Stanley B.C.” ; “vii.20.1929 W.G. Mathers” ; “Allotype ♀ *Catops mathersi* 1954-M. Hatch” ; “HOL-0080” ; “COL-20225”.



Colon complicatum. Hatch 1957: UWPB, 16: 37. [Fig. 1D] Type ♂. With genitalia in vial on pin, labels: “Creston, B.C. 6.v.1949 G. Stace Smith” ; “evening flight” ; “*Colon complicatum* Hatch” ; “TYPE *Colon (Myloechus) complicatum* 1954-M. Hatch” ; “*Colon (Myloechus) serratum* Hatch DET. S. Peck 1995” ; “HOL-0004” ; “COL-16611”.



Colon femoralis. Hatch 1957: UWPB, 16: 41. [Fig. 1E] Type ♂. With genitalia in vial on pin, labels: “Creston, B.C. 3.vi.1949 G. Stace Smith”; “evening flight”; “*Colon femoralis* Hatch”; “Ex. G. Stace Smith collection purchased 1960”; “TYPE ♂ *Colon* (*s. str.*) *femoralis* 1954-M. Hatch”; “syn of *Colon lanceolatum* Hatch 57 DET. S. Peck 1992”; “HOL-0005”; “COL-16612” [synonym of *Colon* (*Colon*) *lanceolatum* Hatch (Peck and Stephan 1996)]. [Article 31.2 of the ICZN code requires that genus and species name gender agree; *i.e.*, this species should be *Colon femorale*.]



Colon tibialis. Hatch 1957: UWPB, 16: 40. [Fig. 1F] Type ♂. With genitalia in vial on pin, labels: “Creston, B.C. 24.v.1948 G. Stace Smith”; “evening flight”; “*Colon tibialis* Hatch”; “TYPE ♂ *Colon* (*s. str.*) *tibialis* 1954-M. Hatch”; “*Colon tibialis* Hatch det. K. Stephan 1990”; “HOL-0006”; “COL-16613”. [Article 31.2 of the ICZN code requires that genus and species name gender agree; *i.e.*, this species should be *Colon tibiale*; Hatch originally published the species name as *tibialis*.]



Colon vancouverense. Peck and Stephan 1996: The Canadian Entomologist, 128: 694. [Fig. 1G] Holotype ♂. With genitalia in vial on pin, labels: “Royal Oak V.I. B.C.” ; “29.v.1956 E. Argyle” ; “*Colon* ♂ Hatch 1959” ; “Ex. G. Stace Smith collection purchased 1960” ; “HOLOTYPE *Colon (Colon) vancouverensis* Peck & Stephan 1995” ; “HOL-0007” ; “COL-16614”.



Hydnobius contortus. Hatch 1957: UWPB, 16: 24. [Fig. 2AC] Type ♂. Labels: “Creston, B.C. 12.xii.1951 G. Stace Smith”; “on snow”; “TYPE ♂ *Hydnobius contortus* 1954-M. Hatch”; “Ex. G. Stace Smith collection purchased 1960”; “HOL-0074”; “COL-21219”.



Hydnobius contortus (dorsal)
Holotype-0074 male

© SEM-UBC COL-20219

Hydnobius crestonensis. Hatch 1957: UWPB, 16: 23. [Fig. 2AD] Type ♂. Labels: “Creston, B.C. 20-xi 1948 G. Stace Smith”; “on snow”; “Ex. G. Stace Smith collection purchased 1960”; “TYPE ♂ *Hydnobius crestonensis* 1954-M. Hatch”; “HOL-0075”; “COL-21220”; “*Macrohydnobius crestonensis* (Hatch) Det. S. Peck 2008” [current combination *Macrohydnobius crestonensis* (Hatch)].



Hydnobius stacesmithi. Hatch 1957: UWPB, 16: 24. [Fig. 2AE] Type ♂. Labels: “Copper Mtn., B.C. 30.x.1929 G. Stace Smith” ; “on snow” ; “TYPE ♂ *Hydnobius stace-smithi* 1954-M. Hatch” ; “Ex. G. Stace Smith collection purchased 1960” ; “HOL-0076” ; “COL-21221” ; “*Hydnobius matthewsi* Crotch Det. S. Peck, 2008” [synonym of *Macrohydnobius matthewsi* (Crotch)].



Leiodes tenuis. Hatch 1957: UWPB, 16: 28. [Fig. 3A] Type ♂. Labels: “Nicola Ranges, B.C.”; “31.viii.1932 W.W. Speam”; “sweepings 3800ft.”; “Bel 1954 H. Houk *tenuis*”; “*Leiodes tenuis* Hatch”; “TYPE ♂ *Leiodes tenuis* 1954 M. Hatch”; “*Leiodes serripes* Hatch det. R. Baranowski 1985 ♂”; “HOL-0078”; “COL-21223” [synonym of *Leiodes serripes* Hatch].



Ptomaphagus thomomysi. Hatch 1957: UWPB, 16: 42. [Fig. 1C] Type ♀. Labels: “Creston, B.C. 14.v.1948 G. Stace Smith”; “in gopher burrow”; “TYPE ♀ *Ptomaphagus (Adelops) thomomysi* 1954-M. Hatch”; “Ex. G. Stace Smith collection purchased 1960”; “*Ptomaphagus nevadicus* det. S. Peck 1970”; “HOL-0003”; “COL-16610” [synonym of *Ptomaphagus nevadicus* Horn].



P. thomomysi. Hatch 1957. [Fig. 3D] Allotype ♂. Labels: “Creston, B.C. 12.v.1948 G. Stace Smith” ; “in gopher burrow” ; “TYPE ♀ *Ptomaphagus (Adelops) thomomysi* 1954-M. Hatch” ; “Ex. G. Stace Smith collection purchased 1960” ; “*Ptomaphagus nevadicus* det. S. Peck 1970” ; “HOL-0081” ; “COL-21226” [synonym of *Ptomaphagus nevadicus* Horn].



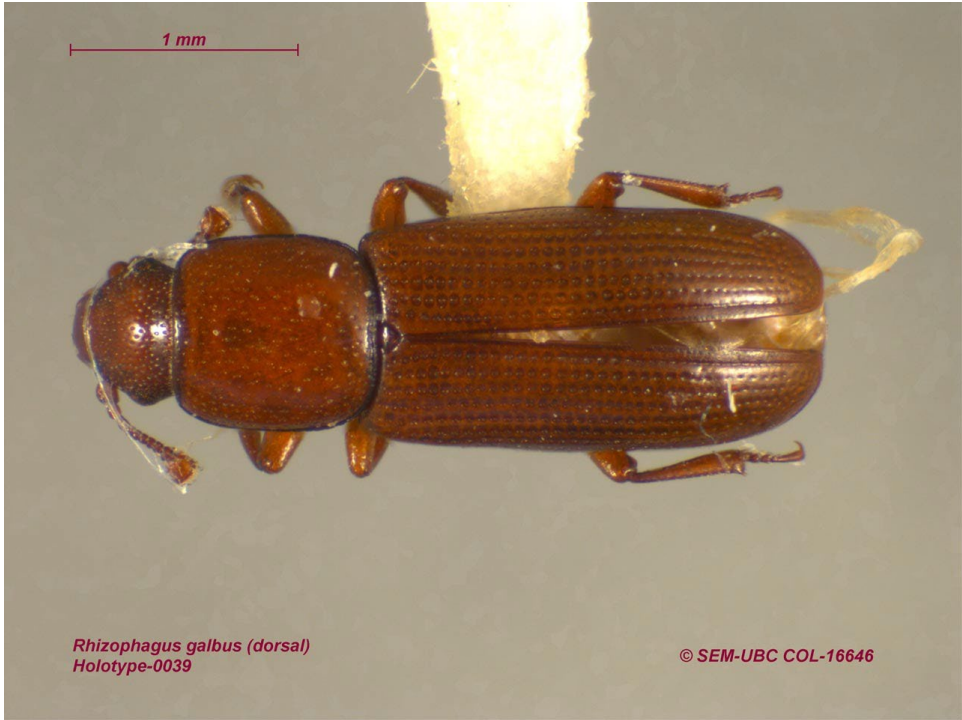
Nemonychidae

Pityomacer pix. Kuschel 1989: *Insect Systematics and Evolution* (formerly *Entomologica Scandinavica*), 20: 121–171. [Fig. 2R] Holotype ♂. Labels: “♂” ; “Vernon, B.C. 25.v.1946 Hugh B. Leech” ; “*comptus* ? LeC.” ; “Looks like 16325. May be 16329 ?” ; “Ex. G. Stace Smith collection purchased 1960” ; “U Br C” ; “HOLOTYPE *Pityomacer pix* Kuschel, 1986” ; “*Pityomacer pix* Kuschel det. G. Kuschel 1986” ; “*Pityomacer pix* Kuschel det. G. Kuschel 1987” ; “HOL-0050” ; “COL-16657”.



Rhizophagidae

Rhizophagus galbus. Bousquet 1990: The Canadian Entomologist. 122: 148. [Fig. 2G] Holotype ♂. Labels: “Ex. G. Stace Smith collection purchased 1960” ; “Creston, B.C.14.vi.1951 G. Stace Smith” ; “ex. *Populus trichocarpa* 2000 ft.” ; “10156” ; “HOLOTYPE *Rhizophagus galbus* Bousquet” ; “HOL-0039” ; “COL-16646”.



Staphylinidae

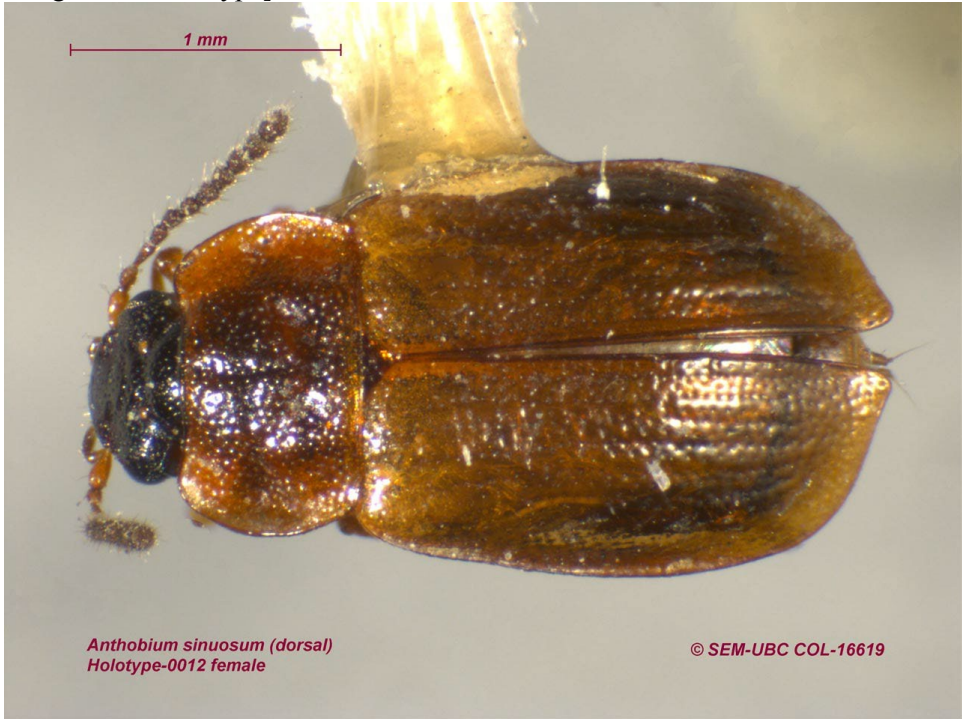
Achrolocha leechi. Hatch 1957: UWPB, 16: 79. [Fig. 1J] Type. Labels: “Salmon Arm 23.xi.33 Hugh B. Leech”; “on discarded lemon”; “Phyllodrops”; “TYPE *Achrolocha leechi* 1951-M. Hatch”; “HOL-0010”; “COL-16617” [current combination *Elonium leechi* (Hatch)].



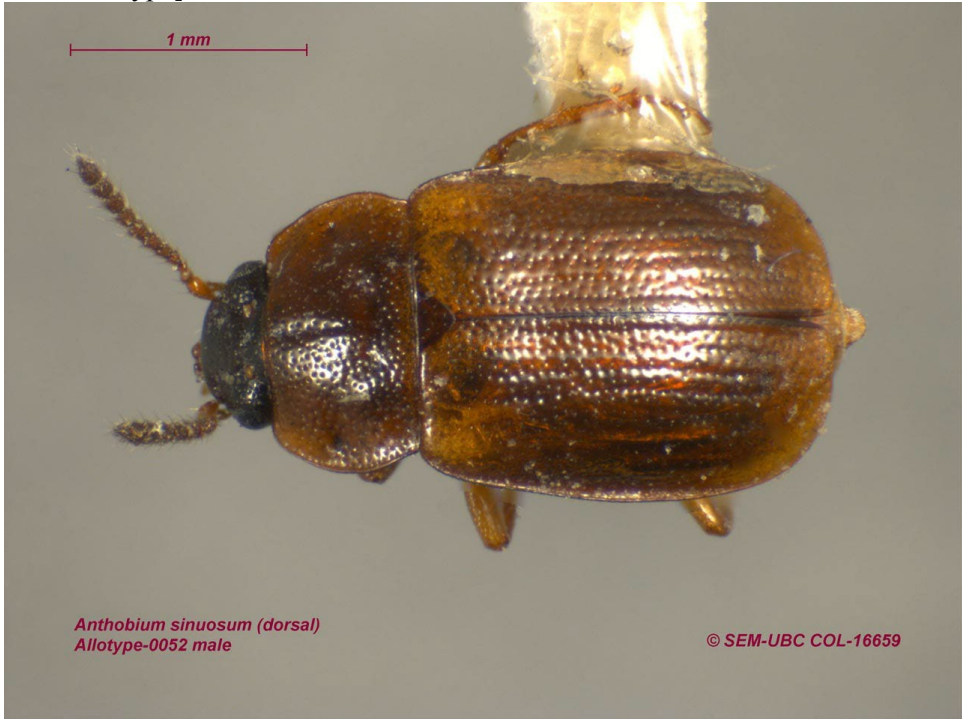
Ancyrophorus columbiensis. Hatch 1957: UWPB, 16: 91. [Fig. 1S] Type. Labels: "Copper Mtn., B.C. 11.x.1930 G. Stace Smith" ; "*Carpelimus* sp. Saevers 1945" ; "TYPE *Ancyrophorus columbiensis* 1951 – M.H. Hatch" ; "HOLOTYPE *Ancyrophorus columbiensis* Hatch" ; "Ex. G. Stace Smith collection purchased 1960" ; "*Ancyrophorus columbiensis* Hatch" ; "*Ochtheophilus columbiensis* Hatch det. Makranczy, 1999" ; "HOL-0019" ; "COL-16626" [current combination *Ochtheophilus columbiensis* (Hatch)].



Anthobium sinuosum. Hatch 1957: UWPB, 16: 66. [Fig. 1L] Type ♀. Labels: “Creston, B.C. 20.ix.1951 G. Stace Smith” ; “Ex. Fungus” ; “TYPE ♀ *Anthobium sinuosum* 1951-M.H. Hatch” ; “Ex. G. Stace Smith collection purchased 1960” ; “HOL-0012” ; “COL-16619” [Hatch (1957) published “Type male . . .”; however, the label clearly states this specimen is female and is designated as the type].



A. sinuosum. Hatch 1957. [Fig. 2T] Allotype ♂. Labels: “Creston, B.C. 20.ix.1951 G. Stace Smith”; “Ex. Fungus”; “ALLOTYPE ♂ *Anthobium sinuosum* 1951-M.H. Hatch”; “Ex. G. Stace Smith collection purchased 1960”; “HOL-0052”; “COL-16659” [Hatch (1957) published “Type male, Allotype . . . female”; however, the label clearly states this specimen is male and is designated as the allotype].



Arpedium columbiense. Hatch 1957: UWPB, 16: 53. [Fig. 10] Type. Labels: “Barkerville, B.C. 19.viii.1950 G. Stace Smith”; “Wendel Park”; “Ex. G. Stace Smith collection purchased 1960”; “TYPE *Arpedium columbiense* 1951-M.H. Hatch”; “*Arpedium cribratum* Fauvel Det. J.M. Campbell 1981”; “HOL-0015”; “COL-16622” [synonym of *Arpedium cribratum* Fauvel].



Bledius bowronensis. Hatch 1957: UWPB, 16: 105. [Fig. 1T] Type. Labels: “Bowron Lake 19.viii.1950 B.C. G. Stace Smith”; “TYPE *Bledius bowronensis* 1951- M.H. Hatch”; “*Bledius bowronensis* Hatch”; “HOL-0020”; “COL-16627”.



Lathrobium guppyi. Hatch 1957: UWPB, 16: 164. [Fig. 1U] Type ♀. Labels: “Wellington, B.C. 11.v.1946 Richard Guppy”; “Paederinae Seavers, 1947”; “Type ♀ *Lathrobium (Tetartopeus) guppyi* 1951-M.H. Hatch”; “*Tetartopeus Lathrobium guppyi* Hatch”; “*Medon guppyi* (Hatch) ’76 Det. L.E. Watrous”; “HOL-0021”; “COL-16628” [current combination *Medon guppyi* (Hatch)].



Lobrathium impressimum. Hatch 1957: UWPB, 16: 167. [Fig. 1V] Type ♂. Labels: “Kootenay Ldg. 19.vi.1948 B.C. G. Stace Smith” ; “Shaw Creek” ; “Type ♂ *Lobrathium* (*s. str.*) *impressimum* 1951-M.H. Hatch” ; “Ex. G. Stace Smith collection purchased 1960” ; “*Lathrobium coloradense* (Casey) ’76 det. LE Watrous” ; “HOL-0022” ; “COL-16629”.



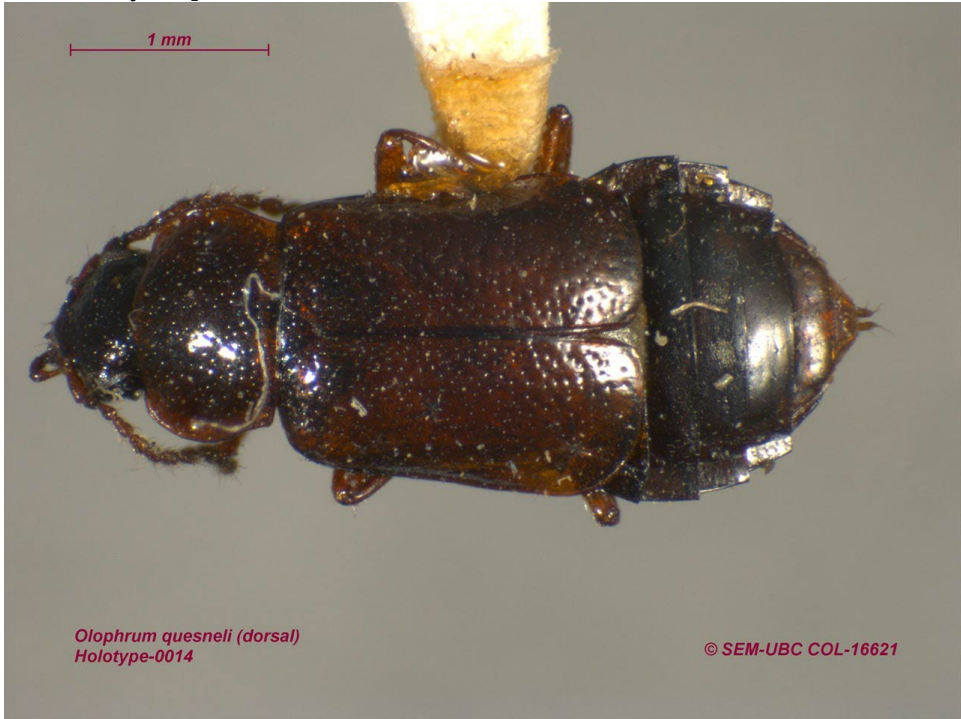
Mycetoporus rugosus. Hatch 1957: UWPB, 16: 131. [Fig. 2B] Type. Labels: “Terrace B.C. Mrs. W.W.H.” ; “*Mycetoporus humidus* Say” ; “Type *Mycetoporus rugosus* 1951-M. Hatch” ; “HOL-0034” ; “COL-16641”.



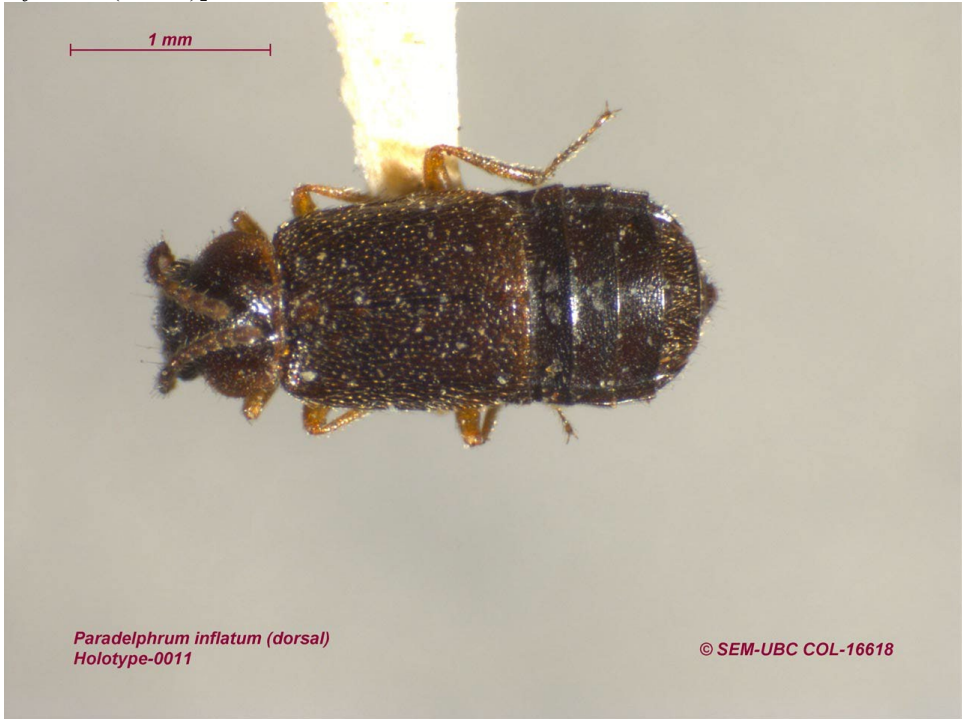
Olophrum leechi. Hatch 1957: UWPB, 16: 63. [Fig. 1M] Type ♂. Labels: “Grouse Mt. 17.xi.1929 H.B. Leech”; “TYPE ♂ *Olophrum leechi* 1951-M. Hatch”; “♂”; “*Anthobium leechi* (Hatch) Det. J.M. Campbell 1981”; “HOL-0013”; “COL-16620”.



Olophrum quesneli. Hatch 1957: UWPB, 16: 62. [Fig. 1N] Type ♀. Labels: “Barkerville, B.C. 12.viii.1950 G. Stace Smith” ; “Grouse Creek 4200 ft” ; “TYPE *Olophrum quesneli* 1951-M.H. Hatch” ; “*Olophrum boreale* Paykull Det. J.M. Campbell 1981” ; “HOL- 0014” ; “COL-16621” [synonym of *Olophrum boreale* Paykull].



Paradeliphrum inflatum. Hatch 1957: UWPB, 16: 68. [Fig. 1K] Type ♂. Labels: “Copper Mtn., B.C. 3.xi.1930 G. Stace Smith”; “TYPE *Paradeliphrum inflatum* 1951-M.H. Hatch”; “Ex. G. Stace Smith collection purchased 1960”; “*Paradeliphrum inflatum* Hatch”; “*Porrhodites inflatus* (Hatch) Det. J.M. Campbell”; “HOL-0011”; “COL-16618” [current combination *Porrhodites inflatum* (Hatch)].



Paralispinus rufescens. Hatch 1957: UWPB, 16: 245. [Fig. 11] Type. Labels: “Creston, B.C. 17.vi.1950 G. Stace Smith”; “ex. Rotten wood with ants”; “near 3310”; “TYPE *Lispinus rufescens* 1951-M. Hatch”; “Ex. G. Stace Smith collection purchased 1960”; “HOL-0009”; “COL-16616” [current combination *Clavilispinus rufescens* (Hatch)].



Philonthus confertoides. Hatch 1957: UWPB, 16: 182. [Fig. 1Z] Type ♂. Labels: “Enderby B.C. 15.IX.34 H. Leech”; “♂”; “430”; “near *P. confertus* ? Horn”; “*Philonthus* ? *confertus* 4489 Lec.”; “DEL 1953 H. Houk”; “TYPE ♂ *Philonthus confertoides* 1955-M. Hatch”; “U.B.C. Collection”; “*Philonthus strictus* Hausen Smetana det. 1993”; “HOL-0026”; “COL-16633” [synonym of *Philonthus strictus* Hausen].



Philonthus crestonensis. Hatch 1957: UWPB, 16: 193. [Fig. 1X] Type ♂. Labels: “Creston, B.C. 27.xi.1932 G. Stace Smith” ; “under bark, *Populus trichocarpa*” ; “4401 or near (over) *scopti* C.A. Frost 1946” ; “Ex. G. Stace Smith collection purchased 1960” ; “Type ♂ *Philonthus crestonensis* 1951-M.H. Hatch” ; “HOL-0024” ; “COL-16631” [current combination *Bisnius crestonensis* (Hatch)].



Philonthus forcipatus. Hatch 1957: UWPB, 16: 202. [Fig. 1W] Type ♂. Labels: “Needles, BC 28.ix.1943 H.B. Leech”; “in duff under larch tree”; “DEL 1953 Houk”; “Type ♂ *Philonthus (Gabrius) forcipatus* 1953-M. Hatch”; “Property of UBC”; “HOL-0023”; “COL-16630” [current combination *Gabrius forcipatus* (Hatch)].



Philonthus stace-smithi. Hatch 1957: UWPB, 16: 194. [Fig. 1Y] Type ♂. Labels: “Creston, B.C. 4.iv.1950 G. Stace Smith”; “Rung 4450 ♂ Nov. Scripti C.A Frost 1946”; “Type ♂ *Philonthus stace-smithi* 1951-M. H. Hatch” “Ex. G. Stace Smith collection purchased 1960”; “*Philonthus stace-smithi* Hatch”; “HOL-0025”; “COL-16632” [The ICZN code prohibits the use of hyphens; *i.e.*, this species should be *Philonthus stacesmithi*; Hatch originally published the species name as *stace-smithi*.] [current combination *Bisnius stacesmithi* (Hatch)].



Phlaeopterus kootenayensis. Hatch 1957: UWPB, 16: 58. [Fig. 1R] Type ♂.
Labels: “Bull River 15.ix.1954 G. Stace Smith”; “6 mi. from mouth”; “TYPE
Phlaeopterus kootenayensis 1955-M.H. Hatch”; “*Phlaeopterus kootenayensis*
Hatch”; “HOL-0018”; “COL-16625”.



Phloeopterus stace-smithi. Hatch 1957: UWPB, 16: 60. [Fig. 1Q] Type ♂. Labels: “Barkerville, B.C. 13.VIII.1950 G. Stace Smith” ; “Round Top Mtn. 6200 ft.” ; “TYPE ♂ *Phloeopterus stace-smithi* 1951-M.H. Hatch” ; “Ex. G. Stace Smith collection purchased 1960” ; “*Phloeopterus stace-smithi* Hatch” ; “HOL-0017” ; “COL-16624”. [The ICZN code prohibits the use of hyphens, i.e. this species should be *Phloeopterus stacesmithi*; Hatch originally published the species name as *stace-smithi*].



Phloeopterus stace-smithi (dorsal)
Holotype-0017 male

© SEM-UBC COL-16624

Quedius raphioides. Hatch 1957: UWPB, 16: 219. [Fig. 1AA] Type ♂. Labels: “Barkerville, B.C. 12.VIII.1950 G. Stace Smith” ; “TYPE ♂ *Quedius (Distichalius) raphioides* 1952-M.H. Hatch” ; “*Quedius raphioides* Hatch” ; “*Quedius fulvicollis* Steph. Smetana det. 1968” ; “HOL-0027” ; “COL-16634” [synonym of *Quedius fulvicollis* Stephens].



Sepedophilus carissimus. Hatch 1957: UWPB, 16: 125. [Fig. 2A] Type. Labels: “Creston, B.C. 3.iv.1949” ; “TYPE *Conosoma carissimum* 1951-M.H. Hatch” ; “Ex. G. Stace Smith collection purchased 1960” ; “*Sepedophilus carissimus* Hatch” ; “HOL-0033” ; “COL-16640” [synonym of *Sepedophilus littoreus* Linnaeus].



Siagonium stace-smithi. Hatch 1957: UWPB, 16: 243. [Fig. 1H] Type ♂. Labels: “Creston, B.C. 4.vi.1949 G. Stace Smith” ; “Evening flight” ; “*Siagonium* sp. nov.?” ; “Near 3298 C.A. Frost 8.xi.1949” ; “TYPE ♂ *Siagonium stace-smithi* 1951-M.H. Hatch” ; “Ex. G. Stace Smith collection purchased 1960” ; “HOL-0008” ; “COL-16615”. [The ICZN code prohibits the use of hyphens; *i.e.*, this species should be *Siagonium stacesmithi*; Hatch originally published the species name as *stace-smithi*].



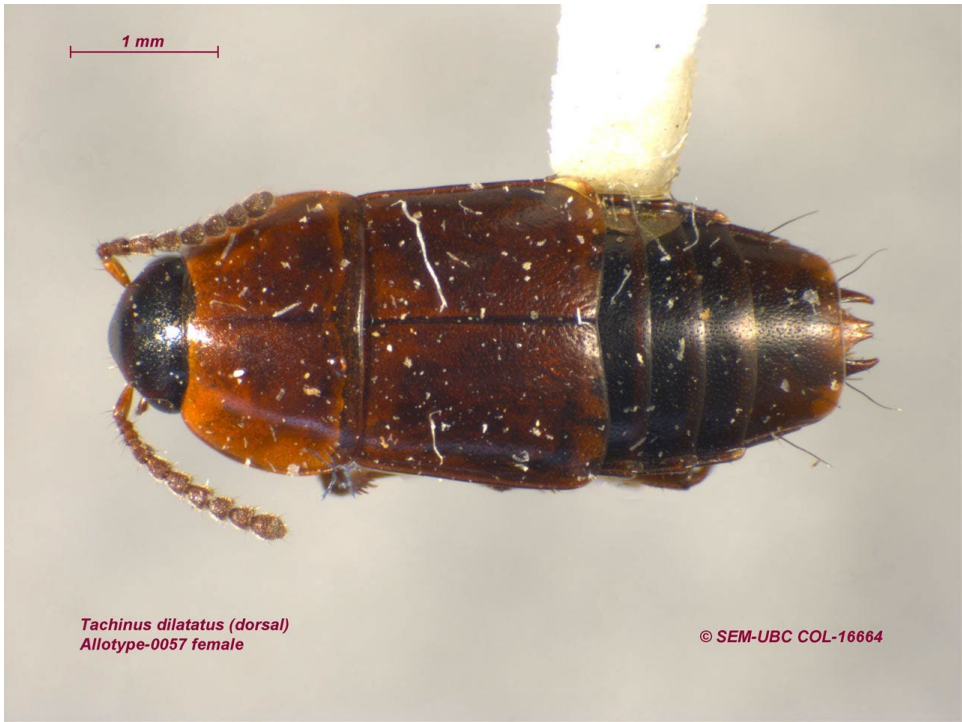
Sunius rugithorax. Hatch 1957: UWPB, 16: 154. [Fig. 2U] Allotype ♂. Labels: “Creston, B.C. 4.iv.1950 G. Stace Smith” ; “under stone” ; “ALLOTYPE ♂ *Medon (Caloderma) rugithorax* 1951-M.H. Hatch” ; “Ex. G. Stace Smith collection purchased 1960” ; “HOL-0053” ; “COL-16660 “ [Hatch (1957) published as “allotype female”; specimen clearly labelled as male] [current and published combination *Sunius rugithorax* Hatch; labelled as *Medon (Caloderma) rugithorax* Hatch].



Tachinus acutus. Hatch 1957: UWPB, 16: 112. [Fig. 1AB] Type ♂. Labels: “Wynndel, B.C. 23.viii.1949 G. Stace Smith” ; “Ex. Fungus” ; “Type ♂ *Tachinus acutus* 1951-M. Hatch” ; “Ex. G. Stace Smith collection purchased 1960” ; “*Tachinus acutus* Hatch” ; “HOL-0028” ; “COL-16635” [synonym of *Tachynus quebecensis* Robert].



Tachinus dilatatus. Hatch 1957: UWPB, 16: 117. [Fig. 2Y] Allotype ♀. Labels: “ORE: Anthony Lake Blue Mts. 7000 ft. June 25, 1952. B. Malkin”; “Del 1954 H. Houk”; “ALLOTYPE ♀ *Tachinus dilatatus* 1954-M. Hatch”; “HOL-0057”; “COL-16664”.



Tachinus paradisi. Hatch 1957: UWPB, 16: 118. [Fig. 2AA] Allotype ♀. Labels: “Mt. Rainier, WASH. Paradise Park July 19, 1949 M.H. Hatch” ; “ALLOTYPE ♀ *Tachinus paradisi* 1954-M. Hatch” ; “*Tachinus dilatatus* Hatch det. J.M. Campbell ‘87” ; “HOL-0059” ; “COL-16666” [synonym of *Tachinus dilatatus* Hatch].



Tachinus stacesmithi. Campbell 1973: Memoirs of the Entomological Society of Canada, 90: 59–60. [Fig. 1AC] Holotype ♂. Labels: “Creston, B.C. 26.xi.1933 G. Stace Smith”; “under cover meadow 1750 ft.” [round blue label] “*Tachinus* C.H. Seevers 1945 ♂”; “♂S”p; n“oCv..A. Frost Collection 1962”; “HOLOTYPE *Tachinus stacesmithi* Campbell”; “HOL- 0029”; “COL-16636”.



T. stacesmithi. Campbell 1973. [Fig. 2AB] Allotype ♀. Labels: “Creston, B.C. 10.v.1951 G. Stace Smith”; “Ex. *Populus trichocarpa*”; “4670 ♀”; “*Tachinus pallipes* Grav. ♀ 4670 M. Hatch – 1955”; “Ex. G. Stace Smith collection purchased 1960”; “*Tachinus stacesmithi* Campbell ALLOTYPE”; “HOL-0060”; “COL-16667”.



Tachinus varians. Hatch 1957: UWPB, 16: 119. [Fig. 2Z] Allotype ♀. Labels: “Boyer Ore 4/11/36”; “DEL 1952 H. Houk”; “ALLOTYPE ♀ *Tachinus varians* 1951-M. Hatch”; “*Tachinus contortus* Hatch det. J.M. Campbell ‘87”; “HOL-0058”; “COL-16665” [synonym of *Tachinus contortus* Hatch].



Tachinus varians (dorsal)
Allotype-0058 female

© SEM-UBC COL-16665

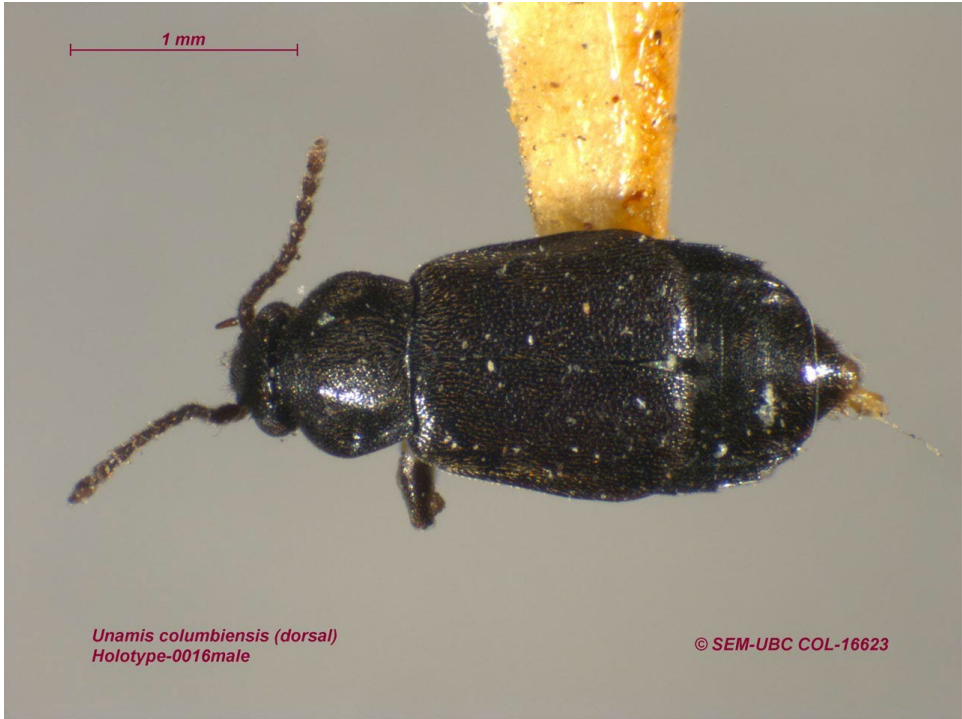
Tachyporus stacesmithi. Campbell 1979: Memoirs of the Entomological Society of Canada, 109: 37–39. [Fig. 1AE] Holotype ♂. Labels: “Creston 30.vii.1956 G. Stace Smith” ; “4678” ; “Ex. G. Stace Smith collection purchased 1960” ; “HOLOTYPE ♂ *Tachyporus stacesmithi* desig. 1976 J.M. Campbell CNC No.” ; “UBCZ” ; “HOL-0031” ; “COL-16638”.



T. stacesmithi. Campbell 1979. [Fig. 1AF] Allotype ♀. Labels: “Creston, B.C. 27.x.1951 G. Stace Smith” ; “river bank” ; “Ex. G. Stace Smith collection purchased 1960” ; “ALLOTYPE ♀ *Tachyporus stacesmithi* desig. 1976 J.M. Campbell CNC No.” ; “UBCZ” ; “HOL-0032” ; “COL-16639”.



Unamis columbiensis. Hatch 1957: UWPB, 16: 56. [Fig. 1P] Type ♂. Labels: “Sanca, B.C. 31.iii.1933 G. Stace Smith”; “on moss, stream bank”; “*Unamis truncata* Csy.? over 3433? J.W Greer 1948 over”; “TYPE ♂ *Unamis columbiensis* 1951-M.H. Hatch”; “*Unamis columbiensis* Hatch”; “HOL-0016”; “COL-16623”.



Tenebrionidae

Hymenorus megops. Hatch 1965: UWPB, 16: 185. [Fig. 2J] Type. Labels: “McMinnville Ore vi-14-1942 KM & DM Fender”; “TYPE *Hymenorus megops* 1960-M. Hatch”; “*Hymenorus sinuatus* Fall Det. J.M. Campbell 19___”; “HOL-0042”; “COL-16649”.



Hymenorus megops (dorsal)
Holotype-0042

© SEM-UBC COL-16649

Hymenorus setosus. Hatch 1965: UWPB, 16: 185. [Fig. 2I] Type. Labels: “ORE.: Rogue Rv. N.F. Beaver Sulphur F.C. Aug. 10, 1950 K.M. Fender” ; “TYPE *Hymenorus setosus* 1960-M. Hatch” ; “HOL-0041” ; “COL-16648”.



Telesicles magnus. Hatch 1965: UWPB, 16: 185. [Fig. 2K] Type. Labels: “Seattle, Wash. vii 28” ; “TYPE *Telesicles magnus* 1960-M. Hatch” ; “*Hymenorus sinuatus* Fall Det. J.M. Campbell” ; “HOL-0043” ; “COL-16650”.



TRICHOPTERA

Limnephilidae

Limnephilus whiteheadi. Nimmo 1991: Proceedings of the Entomological Society of Washington, 93: 499–500. [Fig. 3E] Holotype ♂. With genitalia in vial on pin, labels: “Cowichan L. 5.ix.1949 G.S. Brown”; [pink label] “HOLOTYPE ♂ *Limnephilus whiteheadi* Nimmo”; “HOL-0068”; “TRI-1236”.



Psychoglypha adamantina. Nimmo 2012: Occasional Papers on Trichoptera Taxonomy, 2: 1–73. [Fig. 3F] Holotype ♂. Specimen in ETOH, labels: “BC, Diamond Head Trail, 3500' walking on snow, 0°C 2.i.1983 S.G. Cannings” ; HOL-0090” ; “TRI-1700”.



P. adamantina. Nimmo 2012. [Fig. 3G] Holotype ♀ [presumably allotype]. Specimen in ETOH, labels: “BC, Diamond Head Trail, 3500' walking on snow, 0°C 2.i.1983 S.G. Cannings” ; HOL-0091” ; “TRI-1701”.



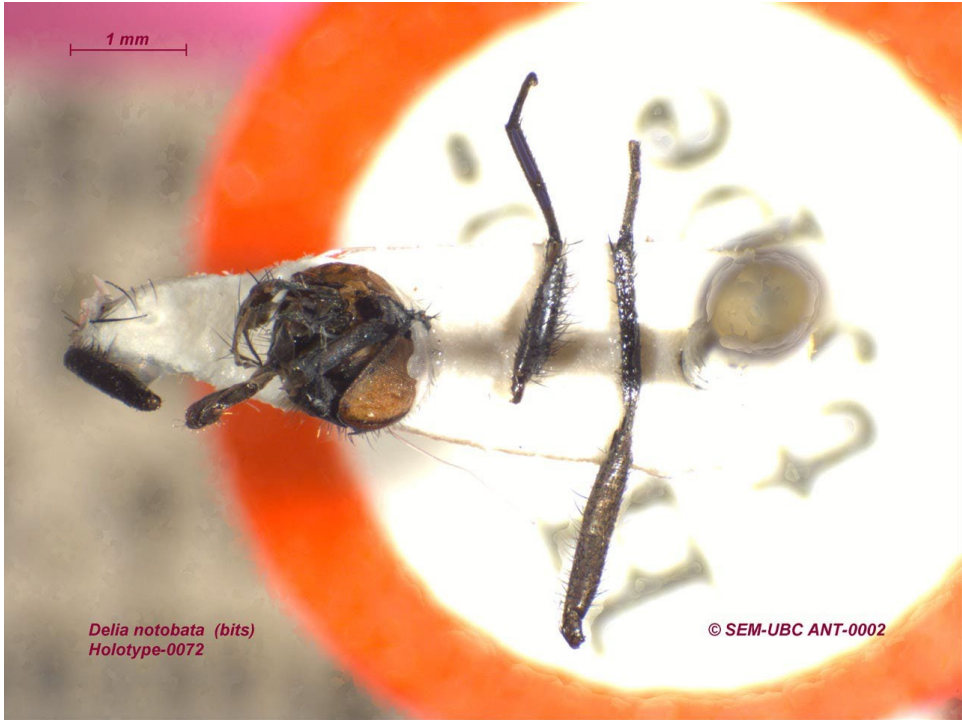
DIPTERA

Anthomyiidae

Anthomyia canningsi. Griffiths 2001: Flies of the Nearctic Region 8(2:13): 1–160. [Fig. 3F] Holotype. With genitalia in vial on pin, labels: [round red] “Holotype”; “YT, Old Crow 3.vii.1983 R.A. Cannings”; “Malaise trap, top of open S-facing bluff”; “*Anthomyia canningsi* Griff. Det. GCD Griffiths”; “HOL-0071”; “ANT-0001”.



Delia notobata. Griffiths 1991: Flies of the Nearctic Region 8(2:8). [Fig. 3G] Holotype. With genitalia in vial on pin, labels: [round red] “Holotype” ; “YT, Bluefish ridge 67°09’N 140°37’W 2600’ 2.vii.1983 R.J. Cannings” ; “*Delia notobata* Griffiths det. GCD Griffiths” ; “HOL-0072” ; “ANT-0002”.



Therevidae

Thereva kristinae. Holston and Irwin 2005: *Studia Dipterologica*, Supplement 13. [Fig. 3H] Holotype ♂. Labels: “Robson, B.C. 10.viii.1967 H.R. Foxlee” ; “THEREVIDAE M.E. Irwin Specimen #76346” ; “U.B.C.Z. (Spencer Mus.) Dept. Zool. Brit. Columbia Needham to Irwin Loan#96481 July 1996” [red label] “HOLOTYPE ♂ *Thereva kristinae* Holston & Irwin K.C. Holston & M.E. Irwin, 2003” ; “HOL-0073” ; “THE-0559”.



HYMENOPTERA

Sphecidae

Crabro canningsi. Finnamore 1988: The Canadian Entomologist, 120: 859–865. [Fig. 3I] Holotype ♂. Labels: “YT, Fish Creek 69°27’N 140°19’W 3.vii.1984 S.G. Cannings” ; “HOLOTYPE *CRABRO CANNINGSI* FINNAMORE” ; “HOL-0069” ; “HYM-2641”.



C. canningsi. Finnamore 1988. [Fig. 3J] Allotype ♀. Labels: “YT, Firth River 69° 13’N 140°03’W 25.vi.1984 S.G. Cannings” ; “ALLOTYPE *CRABRO CANNINGSI* FINNAMORE” ; “HOL-0070” ; “HYM-2642”.



HEMIPTERA

Cicadellidae

Colladonus arctostaphyli. Downes 1952: The Canadian Entomologist, 84: 253. [Fig. 3N] Holotype ♂. Labels: “Malahat, B.C. 18.viii.1950 W. Downes” ; “HOLOTYPE *Colladonus arctostaphyli* Downes” ; “Ex. W. Downes collection donated 1958” ; “HOL-0064” ; “HOM-0004.”



C. arctostaphyli. Downes 1952. [Fig. 3O] Allotype ♀. Labels: “Malahat, B.C. 18.viii.1950 W. Downes” ; “ALLOTYPE *Calladonus arctostaphyli* Downes” ; “Ex. W. Downes collection donated 1958” ; “HOL-0065” ; “HOM-0005.”



Colladonus atriflavus. Downes 1952: The Canadian Entomologist, 84: 253. [Fig. 3M] Holotype ♀. Labels: “Malahat, B.C. 19.ix.1950 W. Downes”; “HOLOTYPE *Colladonus atriflavus* Downes”; “Ex. W. Downes collection donated 1958”; “HOL-0063”; “HOM-0003.”

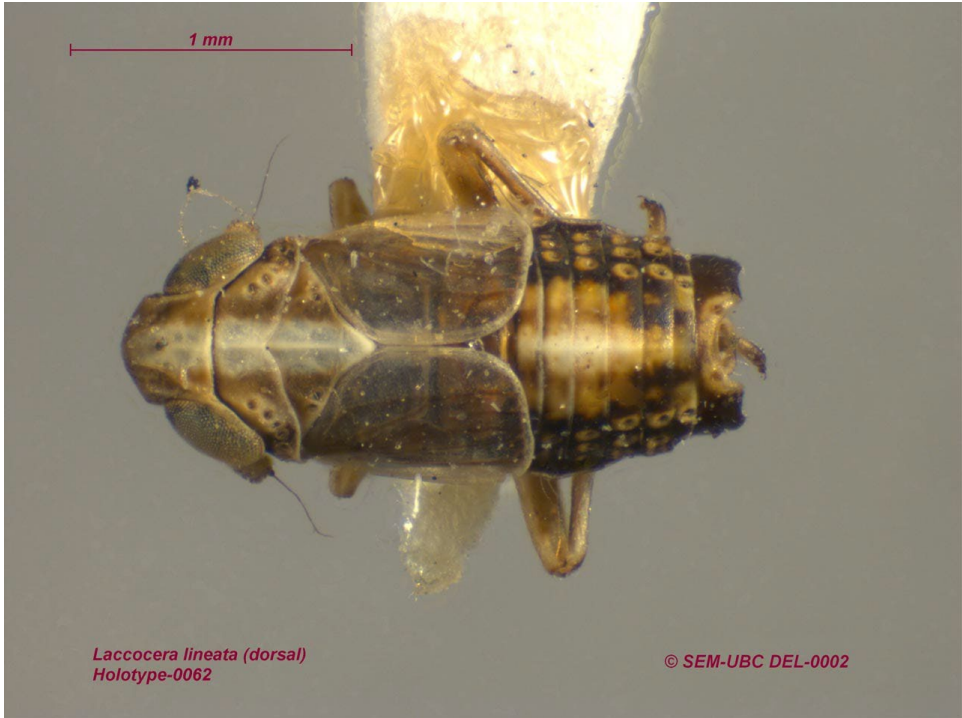


Delphacidae

Achrotile distincta. Scudder 1963: The Canadian Entomologist, 95: 168. [Fig. 3K] Type ♂. Labels: “Westwick L. Cariboo, B.C. 25.v.1959 G.G.E. Scudder 33/59” ; “TYPE *ACHROTILE DISTINCTA* Scudder” ; “HOL-0061” ; “HOM-0001.”



Laccocera lineata. Scudder 1963: The Canadian Entomologist, 95: 174. [Fig. 3L] Type ♂. Labels: “Chilcotin, B.C. 30.v.1959 G.G.E. Scudder” ; “TYPE *LACCOCERA LINEATA* Scudder” ; “HOL-0062” ; “HOM-0002.”



Corixidae

Cenocorixa columbiensis. Lansbury 1960: Proceedings of the Entomological Society of British Columbia, 57: 38. [Fig. 3P] Holotype ♂. Labels: “Pond U.B.C. 12.x.1928 G.J. Spencer” [red ink] “*Cenocorixa columbiensis* Lansbury ♂ Holotype det. I. Lansbury 1960” [pink label] “TYPE” ; “HOL-0066” ; “COR-3611” [synonym of *Cenocorixa blaiselli* Hungerford].



Cenocorixa downesi. Lansbury 1960: Proceedings of the Entomological Society of British Columbia, 57: 40. [Fig. 3R] Type ♂ with genitalia on slide. Labels on pin: “Stanley Park 8.x.1925 T.T. W.M.” [red ink] “*Cenocorixa downesi* TYPE Lansbury det. I. Lansbury 1960” [pink label] “TYPE” ; “HOL-0087” ; “COR-1148”; and labels on slide: “Canada, B.C. Stanley Park 8.x.1925 T.T.W.M. *CENOCORIXA DOWNESI* NOV. SP. Lansbury TYPE” ; “*Cenocorixa andersoni* Hung. Det. A. Jansson 1970” [synonym of *Cenocorixa andersoni* Hungerford].



Cenocorixa hungerfordi. Lansbury 1960: Proceedings of the Entomological Society of British Columbia, 57: 36. [Fig. 3Q] Holotype ♂, Allotype ♀, Paratype ♀ on one pin with holotype ♂ genitalia on slide. Labels on pin: “Kamloops, B.C. 29.vii.1945 G.J. Spencer” [red ink] “*Cenocorixa hungerfordi* Holotype ♂, Allotype ♀, Paratype ♀ det. I Lansbury 1960” [pink label] “TYPE” ; “*Cenocorixa bifida* (Hung.) Det. A. Jansson 1970” ; “HOL-0067” ; “COR-1302” ; and labels on slide: “HOLOTYPE ♂ *Cenocorixa hungerfordi* Lansbury det. I. Lansbury 1960 Kamloops, B.C. 29.vii.1945 G.J. Spencer” ; “*Cenocorixa bifida* (Hung.) Det. A. Jansson 1970” [current combination *Cenocorixa bifida hungerfordi* Lansbury].



Rhopalidae

Arhyssus longirostratus. Chopra 1968: Annals of the Entomological Society of America, 61: 629–655. [Fig. 3S] Holotype. Labels: “Yakima Wash. 27.vii.1923 W.D.” ; “Ex. W. Downes collection donated 1958” ; “HOLOTYPE *Arhyssus longirostratus* Chopra” ; “HOL-0089” ; “RHO-0002”.



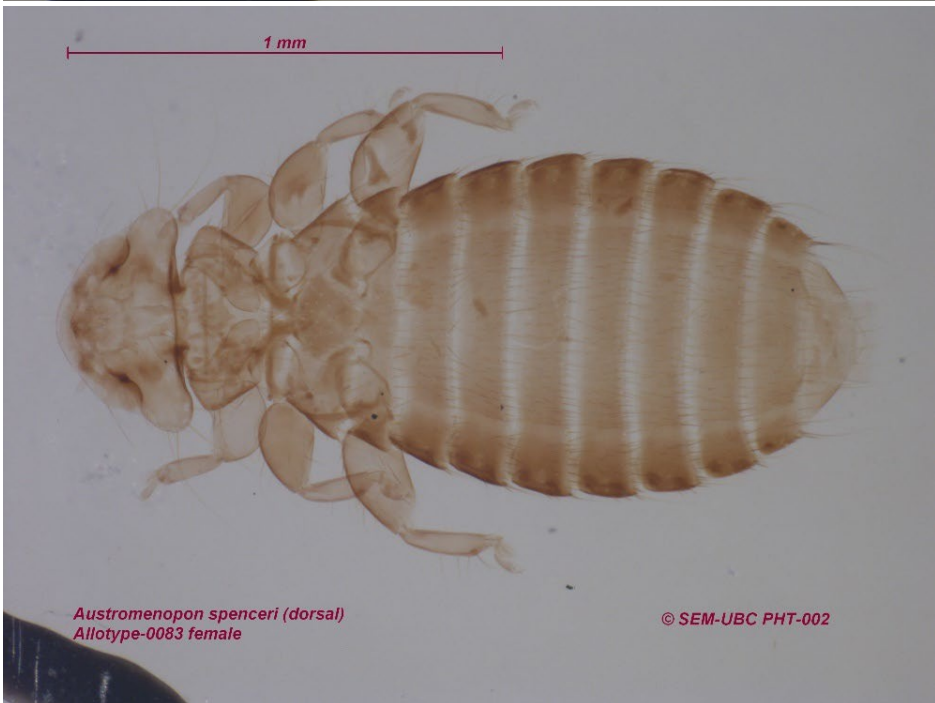
PSOCODEA

Menoponidae

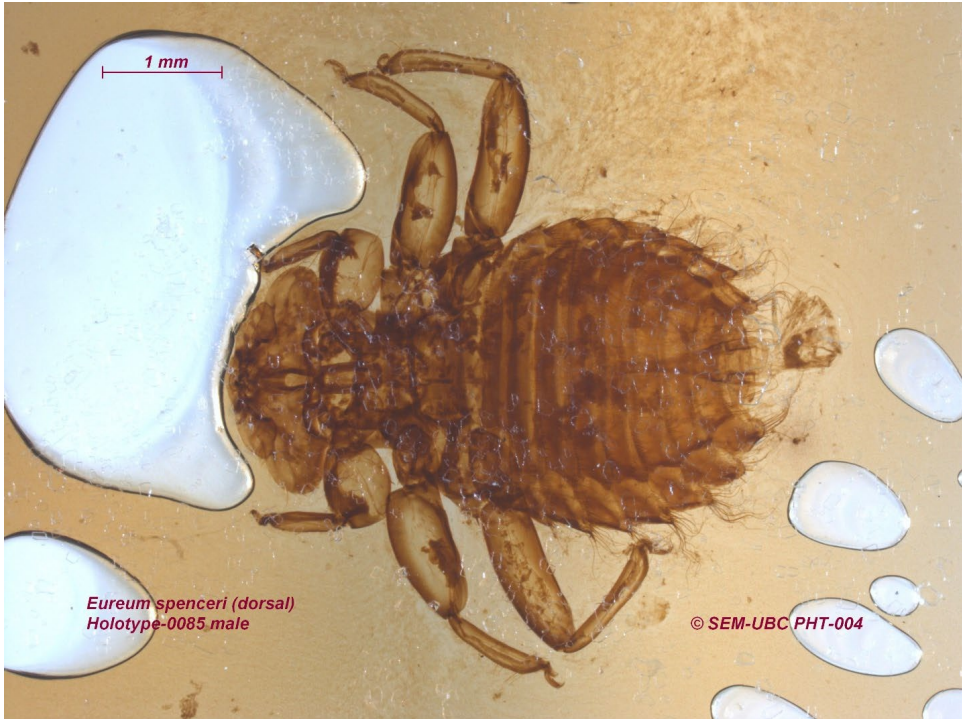
Amyrsidea minuta. Emerson 1961: The Florida Entomologist, 44: 117–118. [Fig. 3V] Holotype ♂ and Allotype ♀ on same slide. Labels: “on Peacock Vancouver, B.C. Oct. 15.1949 G.J. Spencer, Colr. from K.C. Emerson” ; “*Amyrsidea minuta* Emerson ♂ ♀ Jan 1961 Holotype ♂ Allotype ♀ K.C. Emerson” ; “HOL-0082” ; “PHT-0001”.



Austromenopon spenceri. Timmermann 1956: Bonner Zoologische Beitrage, 7: 192. Type ♂ [Fig. 3W], Allotype ♀ [Fig. 3X], and Paratype ♂ on same slide. Labels: “*Lobipes lobatus* 223(3) Kamloops. British Columbia, 21.viii.1934. G.J. Spencer. Types”; “*Austromenopon spenceri* Timmermann 1956 Type ♂, Allotype ♀, Paratype ♂”; “HOL-0083”; “PHT-0002”.



Eureum spenceri. Emerson and Pratt 1956: Journal of the Kansas Entomological Society, 29: 21–28. [Fig. 3Y] Holotype ♂ on slide. Labels: “Ex. A.O.U. 422 ♂ *Nephoecetes niger borealis* (Kennerly) Black Swift, 2juv. New Denver B.C. Week May/June 1941 Coll. J. Hatter In DeFaure’s sol. G.J. Spencer”; “*Eureum spenceri* Emerson & Pratt Holotype ♂ K.C. Emerson”; “HOL-0085”; “PHT-0004”.

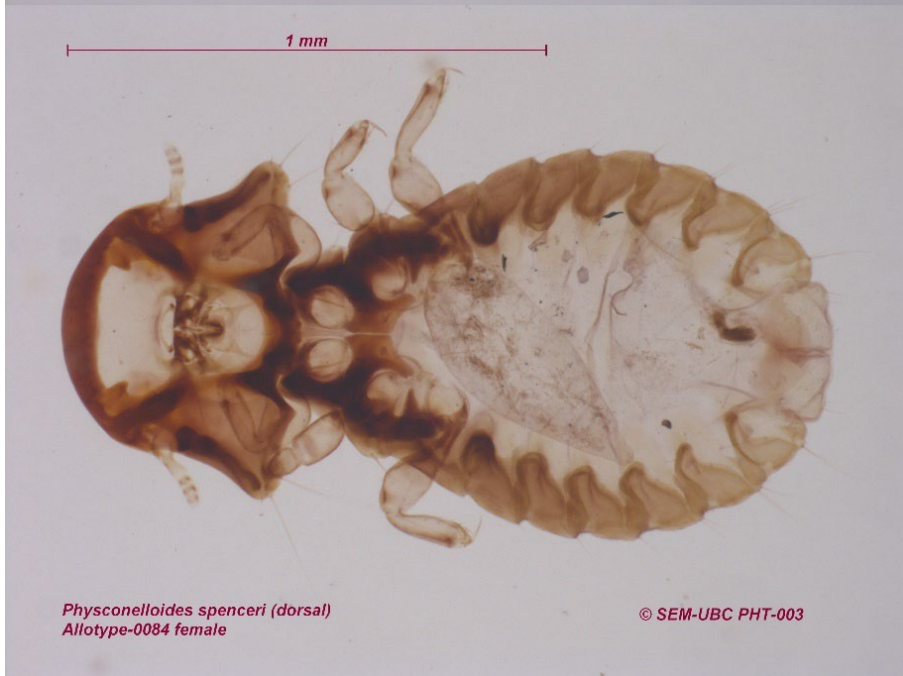
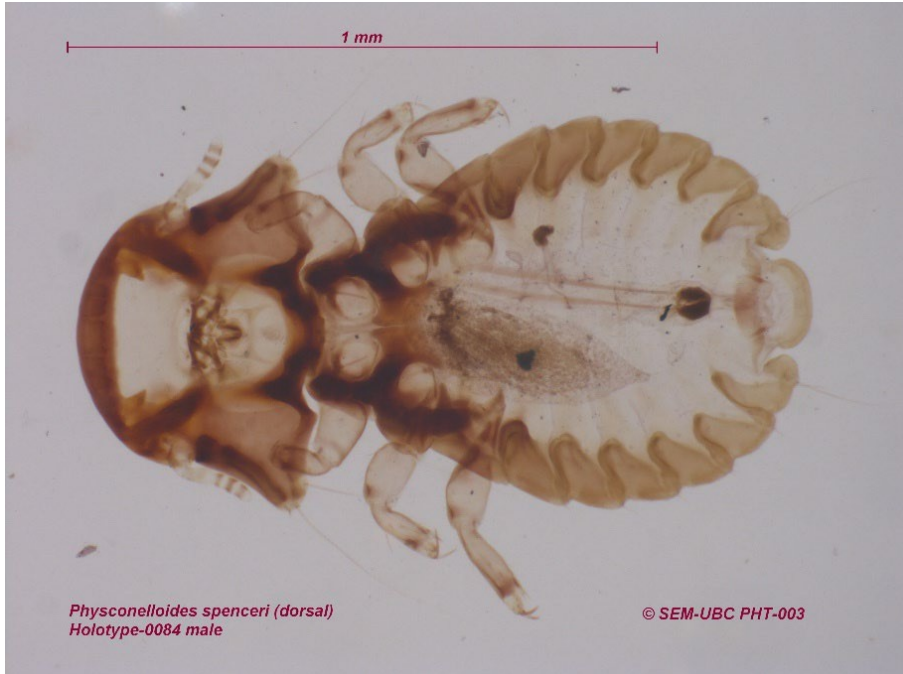


E. spenceri. Emerson and Pratt 1956. [Fig. 3Z] Allotype ♀ on slide. Labels: “[smudged] A.O.U. 422 [not smudged] Black Swift *Nephoecetes niger borealis* Vancouver, B.C. G.J. Spencer Nov. ’31 Bish. # 22779 U.S. Bur. Entomology 1935 H.S.P.” ; “*Eureum spenceri* Emerson & Pratt Allotype ♀ K.C. Emerson” ; “HOL-0086” ; “PHT-0005”.



Phlopteridae

Physconelloides spenceri. Emerson and Ward 1958: Journal of the Kansas Entomological Society, 31: 239–240. Holotype ♂ [Fig. 3AA], and Allotype ♀ [Fig. 3AB], on same slide. Labels: “CANADA: Brit. Col., Vancouver 6.x.1952. Coll. D. Pres. G.J. Spencer R.W. 1711” ; “*Physconelloides spenceri* Emerson & Ward Ex. *Columba fasciata* Holotype ♂ Allotype ♀ C.P.” ; “HOL-0084” ; “PHT-0003”.



LEPIDOPTERA

Geometridae

Hydriomena macdunnoughi. Swett 1918: *The Canadian Entomologist*, 50: 296. [Fig. 3AC] Allotype ♀ with genitalia on slide. Labels on pin: [pink] “489” ; “168” ; “Atlin BC vi.11.1914” [red] “Type” [red] “Type” ; “♀ Allotype Swett Lent to McDunnough 27.xi.52 M.D. at Nova Scotia Museum revising *Hydriomena* see correspondence” ; “*Hydriomena macdunnoughi* Swett ♀ Allotype” ; “Slide No. Hyd 489 ♀” ; “E.H. Blackmore Collection No. - 489” ; “HOL-0088” ; “GEO-0775”; and label on slide: “Slide No. B.C. Hyd 489 ♀ *Hydriomena macdunnoughi* Sw. Atlin B.C. Allotype”.

