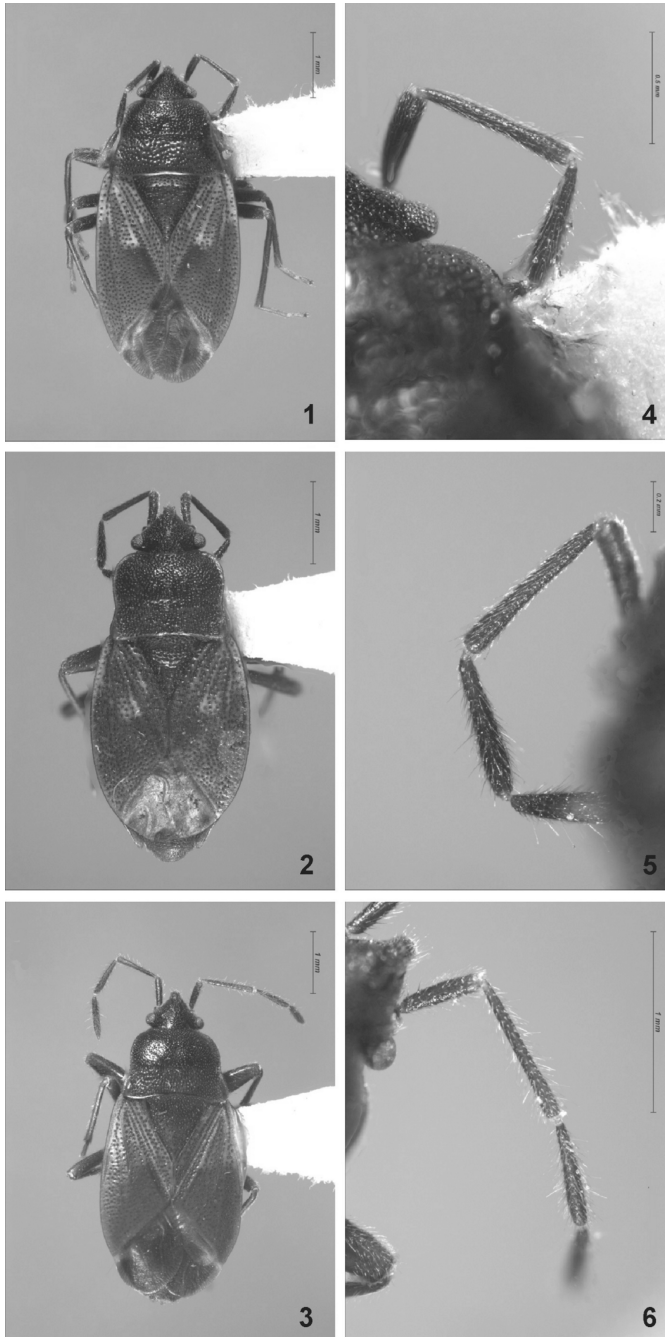


Correction:

Scudder G. G. E., L. M. Humble and T. Loh. 2011. *Drymus brunneus* (Sahlberg) (Hemiptera: Rhyparochromidae): a seed bug introduced into North America. Journal of the Entomological Society of British Columbia 108:29-33.

In Vol. 108 (2011) the plates for Figures 1-6 of Scudder et al. (2011) were not displayed clearly enough in our print journal. The plates are reproduced on the opposite side of this sheet in greyscale along with the original figure heading. Please insert this correction sheet into your copy of V. 108 for the record. Please also note that the free online version of the paper contains full color plates.



Figs. 1-3. Dorsal view: 1. *Drymus brunneus* (Sahlberg) ♀, British Columbia, Canada, Richmond Nature Park, EBT96-0146-06, 23.vii-13.viii.1996 (L. Humble, J. Seed) [Scudder Coll.]; 2. *Drymus brunneus* ♂, Dalkeith Midlothian, UK, 6.ix.1957 (R.A. Crowson) [Scudder Coll.]; 3. *Drymus unus* (Say) ♀, ONT, Canada, Hilton Beach, Sugar Maple Forest, Pan trap, 16.ix-14.x. 1989 (J.E. Swann) [Scudder Coll.]; Figs. 4-6. Detailed structure of second antennal segment: 4. *Drymus brunneus*, BC specimen; 5. *Drymus brunneus*, UK specimen; 6. *Drymus unus*, Ontario specimen. Photos by Don Griffiths.