

A LIST OF THE LEPIDOPTERA COLLECTED IN THE SHUSWAP LAKE DISTRICT OF BRITISH COLUMBIA BY DR. W. R. BUCKELL

E. R. BUCKELL¹

Dominion Entomological Laboratory, Kamloops, B.C.

Nearly all the species listed below were collected by Dr. W. R. Buckell on his own small farm and orchard at South Canoe, four miles southeast of Salmon Arm, B.C. A few specimens were taken as far east as Revelstoke and as far west as Chase.

The collection also contains a few species from typical Dry-belt areas, such as the Okanagan Valley and the Nicola-Kamloops District, but these are not included in the present list as it is the author's intention to list only those found in

the Shuswap Lake District, a definite biotic area typical of the humid transition zone. This area is mountainous, and fairly uniformly covered with forests which are typical of the Interior Douglas fir type and thus occupies a climatic zone that is intermediate in temperature conditions between the yellow pine of the Dry-belt and the Engelmann spruce type of the higher elevations.

All the specimens are beautifully spread even to the smallest of the micros, and many were reared from their larvae.

The list contains 773 species, varieties and forms consisting of 541 macrolepidoptera and 232 microlepidoptera².

The list is arranged according to the "Check List of the Lepidoptera of Canada and the United States of America," Part I, 1938, and Part II, 1939, by J. McDunnough, and the dates after the species name give the earliest and latest dates of capture.

¹ ACKNOWLEDGMENTS: Determinations of material had previously been made for Dr. W. R. Buckell by Dr. J. McDunnough of the Division of Systematic Entomology, Ottawa, and by the late Mr. E. H. Blackmore of Victoria, B.C. Recently Dr. J. McDunnough and Mr. T. N. Freeman of the Division of Entomology greatly assisted me in further determinations and in correcting and bringing this list up to date, for which I wish to extend my grateful thanks.

² As some of the groups of microlepidoptera are under revision, definite determinations were not always possible and some species will be found to be marked "?"; others recorded as "near" to a species; while others are recorded as "undetermined species."

MACROLEPIDOPTERA

Suborder RHOPALOCERA (Butterflies)
 Superfamily PAPILIONOIDEA
 Family PAPILIONIDAE

Papilio L.
 8 zelicaon *Luc.* June 2-12
 16 rutulus *Luc.* May 9, July 7
 18 eurymedon *Luc.* May 10-30

Parnassius Latr.
 27 smintheus magnus *Wgt.*... June 6, July 7
 Family PIERIDAE

Anthocharis Bdv.
 34 sara flora *Wgt.* April 4, May 25

Euchloe Hbn.
 36 ausonides *Bdv.* May 3-23

Colias Fabr.
 47 alexandra emilia *Edw.* ... May 5, Oct. 3

Neophasia Behr.
 76 menapia *F. & F.* Aug. 8-27

Pieris Schrank
 80 sisymbrii flavitincta *Comst.* ... May 23
 81 occidentalis calyce *Edw.* July 5, Aug. 25
 83 napi *gen. vern. marginalis*
Scud. April 28, May 5
 86 rapae *L.* April 21, Aug. 17

Family DANAIDAE

Danaus Kluk
 89 plexippus *L.* June 6, Aug. 8

Family SATYRIDAE

Coenonympha Hbn.
 109 inornata columbiana
McD. May 5, June 29

Minois Hbn.
 117 alope *Fabr.* July 14-29
e boopis Behr June 6, Aug. 4

Oeneis Hbn.
 126 nevadensis *F. & F.* ... May 23, June 20

Erebia Dalm.
 150 epipsodea *Butl.* May 2-31

Family NYMPHALIDAE
 Subfamily NYMPHALINAE

Argynnis Fabr.
 165 leto *Behr.* Aug. 8
 171 atlantis beani *B. & B.* July 1
 178 hydaspes sakuntala *Skin.* July 6, Aug. 14
 184 bremnerii picta *McD.* ... Aug. 7, Sept. 21
 191 nevadensis semivirida *McD.* ... July 18
 199 eurynome opis *Edw.* Aug. 14

Brenthis Hbn.
 200 myrina *Cram.* May 31
 212 bellona *Fabr.* May 24
 213 epithore obscuripennis *Gund.*... July 31

Euphydryas Scud.
 222 anicia hopfingeri *Gund.*... May 2, June 18

- Melitaea** Fabr.
246 palla *Bdv.* May 2, July 7
- Phyciodes** Hbn.
265 tharos pascoensis *Wgt.*... May 30, Aug. 9
267 campestris *Behr.* May 21, Sept. 29
- Polygonia** Hbn.
287 satyrus *Edw.* March 23, Aug. 17
288 faunus rusticus *Edw.*... March 20, Aug. 21
291 zephyrus *Edw.* April 18, Aug. 21
- Nymphalis** Kluk
295 j-album watsoni *Hall.*... July 17, Aug. 21
296 californica *Bdv.* June 12, Aug. 12
297 milberti furcillata *Say.*... May 14, Sept. 30
298 antiopa *L.* April 4, Aug. 19
- Vanessa** Fabr.
299 atalanta *L.* July 1, Aug. 22
301 cardui *L.* June 9, Sept. 12
- Basilarchia** Scud.
324 lorquini burrisonii *Mayn.* June 6-27
- Family LYCAENIDAE
Subfamily THECLINAE
- Strymon** Hbn.
320 titus *Fabr.* July 7-18
382 californica *Edw.* July 4, Aug. 14
392 saepium okanagana
McD. July 19, Aug. 26
- Incisalia** Scud.
404 iroides *Bdv.* April 11, May 21
409 polios *Cook & Wats.*... April 18, May 16
412 eryphon *Bdv.* April 10 May 5
- Subfamily LYCAENINAE
- Lycaena** Fabr.
430 mariposa *Reak.* Aug. 14
432 helioides *Bdv.* May 15, Sept. 18
- Subfamily PLEBEIINAE
- Everes** Hbn.
448 amyntula *Bdv.* May 21, June 10
- Plebeius** Kluk
449 scudderii *Edw.*
(Atyp cal) July 12, Aug. 14
450 melissa *Edw.* May 5, Aug. 5
451 anna *Edw.* Aug. 8
(Probably subspecies of scudderii
Edw.)
453 saepiolus *Edw.* May 5, July 3
455 icarioides montis
Blkmrc. May 22, June 23
- Phaedrotus** Scud.
472 pius daunia *Edw.* May 23
- Claucopsyche** Scud.
473 lygdamus columbia
Skln. April 24, June 2
- Lycaenopsis** F. & F.
475 pseudargiolus
Bdv. & Lec. April 8, May 5
c nigrescens *Fletch.* April 19-26
- Superfamily HESPERIOIDEA
Family HESPERIIDAE
Subfamily PYRGINAE
- Thorybes** Scud.
505 pylades *Scud.* May 30, June 17
- Pyrus** Hbn.
516 ruralis *Bdv.* April 26, May 7
521 communis albescens *Pict.* May 23
- Erynnis** Schr.
541 icelus *Scud. & Burg.*... April 28, June 4
546 persius fredericki
Freeman April 26, May 12
549 callidus *Grin.* May 24
- Subfamily HESPERIINAE
- Ochlodes** Scud.
604 sylvanoides *Bdv.* June 6, Sept. 5
- Amblyscirtes** Scud.
660 vialis *Edw.* May 30, June 13
- Suborder HETEROCERA (Moths)
Superfamily SPHINGOIDEA
Family SPHINGIDAE
Subfamily ACHERONTIINAE
- Sphinx** L.
721 mordecai *McD.* May 19, Aug. 21
730 drupiferarum utahensis
Hy. Edw. July 2-7
- Smerinthus** Latr.
739 jamaicensis *f. norm. geminatus*
Say June 2, July 12
740 cerisyi ophthalmicus
Bdv. June 2, Aug. 18
- Paonias** Hbn.
741 excaecata *A. & S.* July 7
- Pachysphinx** R. & J.
745 modesta *Harr.* July 2-7
- Hemaris** Dalm.
770 difinis rubens *Hy. Edw.*... May 17, July 3
- Subfamily PHILAMPELINAE
- Proserpinus** Hbn.
789 clarkiae *Bdv.* May 9, June 2
790 flavofasciata ulalume *Stkr.*... May 5-10
- Subfamily CHOEROCAMPINAE
- Celerio** Cken.
798 gallii intermedia *Kby.*... June 28, July 3
799 lineata *Fabr.* June 24, Sept. 4
- Superfamily SATURNIOIDEA
Family SATURNIIDAE
- Platysamia** Grt.
807 euryalus kasloensis
Ckl. May 1, June 6
- Telea** Hbn.
812 polyphemus *Cram.* May 18, June 13
- Pseudohazis** G. & R.
840 eglanterina *Bdv.* July 4-16
- Superfamily NOCTUOIDEA
Family NOLIDAE
- Celama** Wlk.
891 minna *Butl.* April 7, May 6
- Family ARCTIIDAE
Subfamily LITHOSIINAE
- Lexis** Wallgr.
905 bicolor *Grt.* Aug. 1-18
- Crambidia** Pack.
911 casta *Pack.* Aug. 10-27
- Clemensia** Pack.
952 albata *Pack.* June 30, July 30
- Ennopsis** Hbn.
958 m-niata *Kby.* July 19, Aug. 5
- Subfamily ARCTIINAE
- Halisidota** Hbn.
980 maculata angulifera *Wlk.* May 5-28

- Cyenia** Hbn.
991 tenera Hbn. June 10-20
- Eubaphe** Hbn.
1023 ferruginosa Wlk. June 29
a immaculata Reak. June 1, July 27
- Apantesis** Wlk.
1034 intermedia form stretchii Grt. Aug. 6
1035 parthenice Kdy. July 29, Aug. 13
1047 nevadensis superba Stretch .. Aug. 8-30
- Leptarctia** Stretch
1063 californiae Wlk. April 26, May 30
- Diacrisia** Hbn.
1065 virginica Fabr. May 14, June 2
1066 vagans kasloa Dyar ... May 24, June 10
- Isia** Wlk.
1069 isabella A. & S. June 26
- Estigmene** Hbn.
1070 acrea Dru. May 4, June 18
1073 congrua Wlk. May 16, June 21
- Hyphantria** Harr.
1075 cunea Dru. May 28
- Parasemia** Hbn.
1092 parthenos Harr. June 4-25
- Platyprepia** Dyar
1096 guttata Bdv. June 24
form ochracea Stretch .. June 14, July 2
- Family AGARISTIDAE
- Alypia** Hbn.
1116 langtoni Couper June 23
1117 ridingsi Grt. May 21-June 11
- Family PHALAENIDAE
Subfamily PANTHEINAE
- Raphia** Hbn.
1141 frater Grt. June 23
- Subfamily ACRONICTINAE
- Acronicta** Ochs.
1152 hesperila Sm. June 13-25
1155 innotata Gn. May 20, June 13
1160 grisea revellata Sm. June 3-18
1168 funeralis G. & R. May 25, June 6
1175 furcifera Gn. June 23
1185 fragilis minella Dyar .. May 16, July 22
1201 impleta illita Sm. June 6-15
1206 distans dolorosa Dyar May 10
1211 perdita Grt.
- Subfamily PHALAENINAE
(Agrotinae)
- Euxoa** Hbn.
1243 andera Sm. Aug. 27, Sept. 3
1250 ridingsiana Grt. Aug. 9-12
1252 flavicollis Sm. July 7
1274 intrita Morr. Aug. 1-20
form strigilis Grt. Aug. 16
form reuda Stkr. Aug. 9-21
1278 infracta Morr. Aug. 5-19
1280 infausta Wlk. July 23, Aug. 5
1284 sponsa Sm. July 24, Aug. 20
1289 perfusca Grt. Aug. 2-25
a cocklei Sm. July 28, Aug. 25
1292 perpolita Morr. Aug. 9-16
1294 stigmatalis Sm. July 19, Aug. 2
1309 mimallonis gagates
Grt. Aug. 19, Sept. 9
1310 messoria Harr. Aug. 1-22
form atrifera Grt. Aug. 10-28
1318 atropulverea Sm. Sept. 9
- 1322 ontario Sm. Aug. 7-19
1324 quinquelinea Sm. Aug. 22, Oct. 9
b incallida Sm. Sept. 3
1341 tessellata Harr. July 8-27
a atropurpurea Grt. July 11
c flaviscapula Sm. July 28, Aug. 4
d tesselloides Grt. July 18, Aug. 12
- 1343 esta Sm. Aug. 27
1351 declarata Wlk. Aug. 6, Sept. 3
1352 campestris Grt. July 25, Aug. 27
1353 verticalis Grt. June 23, Aug. 17
1354 albipennis Grt. Aug. 24, Sept. 3
1355 lillooet McD. July 27, Aug. 22
1366 divergens Wlk. June 22, July 23
1370 obeliscoides Gn. Aug. 16-24
1371 redimicula Morr. July 21, Aug. 16
1372 costata Grt. June 25, July 25
a idahoensis Grt. June 27, Aug. 3
1378 ochrogaster Gn. July 26, Aug. 30
1379 excellens Grt. Aug. 15, Sept. 15
1383 brocha Morr. Aug. 10, Sept. 9
- Chorizagrotis** Sm.
1389 thanatologia Dyar Sept. 9
form perfida Dod. June 17, Aug. 18
- Pseudorthosia** Grt.
1403 variabilis Grt. Aug. 12-28
- Agrotis** Ochs.
1416 vetusta catenuloides Sm.
July 25, Aug. 28
1426 vancouverensis semiclarata Grt.
June 14-21
- 1432 volubilis Harv. May 12, June 7
- Feltia** Wlk.
1442 ducens Wlk. Aug. 10-30
1446 herilis Grt. July 18-28
- Actebia** Steph.
1452 fennica Tausch June 23, Aug. 28
- Spaelotis** Bdv.
1472 clandestina Harr. June 22, July 3
1473 havilae Grt. July 9
- Eurois** Hbn.
1475 occulta Linn. June 7-20
1476 astricta subjugata Dyar
July 23, Aug. 16
1477 nigra Sm. Aug. 13, Sept. 19
- Metalepsis** Grt.
1494 salicarium Wlk. Apr. 4
- Peridroma** Hbn.
1496 margaritosa Haw. Sept. 1, Nov. 1
form saucia Hbn. Sept. 9, Dec. 15
- Pseudospaelotis** McD.
1499 haruspica inopinatus Sm.
June 16, Aug. 1
- Diarsia** Hbn.
1504 cynica perumbrosa Dyar Aug. 12
1510 rosaria Grt. May 21, Aug. 18
- Graphiphora** Ochs.
1511 c-nigrum Linn. June 6, Aug. 15
1512 smithi Snell June 22, Aug. 27
1517 oblata Morr. June 11, Aug. 2
1522 collaris G. & R. June 20, Aug. 25
- Anomogyna** Staud.
1561 elimata Gn. Aug. 17
1564 vernilis Grt. July 22, Aug. 28
- Adelphagrotis** Sm.
1567 indeterminata Wlk. .. July 28, Aug. 15
- Aplectoides** Butl.
1568 condita Gn. June 6

Anaplectoides McD.

- 1569 pressus fales *Sm.* June 6, Aug. 24
 1570 prasina *Schiff.* July 30, Aug. 20

Protolampra McD.

- 1571 rufipectus *Morr.* July 4, Aug. 8

Pseudoglaea Grt.

- 1574 olivata *Harr.* Aug. 26, Sept. 15

Eueretagrotis Sm.

- 1577 perattenta *Grt.* July 11
a inattenta Sm. July 14

Abagrotis Sm.

- 1587 apposita *Grt.* Aug. 8-11
 1590 sambo *Sm.* July 24, Aug. 11
 1593 placida *Grt.* Aug. 1, Sept. 10
 1598 variata *Grt.* Aug. 12
 1599 scopeops *Dyar* June 26, Aug. 19

Rhynchagrotis Sm.

- 1606 insularis *Grt.* May 10, July 16
form confusa Sm. June 17, Aug. 25

Ufeus Grt.

- 1610 electra *Sm.* Oct. 13-28
 1612 hulsti *Sm.* Feb. 1, Nov. 7

Subfamily HADENINAE.

Scotogramma Sm.

- 1633 trifolii *Rott.* July 21, Aug. 23
 1639 oregonica *Grt.* May 17, June 18

Mamestra Ochs.

- 1660 configurata *Wlk.* June 3, July 8

Polia Ochs.

- 1662 discalis *Grt.* June 12, Aug. 20
 1663 nimbosea *Gn.* June 6, July 28
 1669 purpurissata *Grt.* July 2-31
b crydina Dyar July 3
 1672 grandis *Bdv.* May 19-25
 1673 subjuncta *G. & R.* June 12-19
 1678 nevadae *Grt.* June 24, July 21
 1679 radix *Wlk.* June 29, July 16
 1680 segregata *form negussa Sm.*
 April 20, May 19

- 1684 tacoma *Stkr.* May 18, July 16
 1689 meodana *Sm.* June 9-20
 1691 adjuncta *Bdv.* June 7, July 9
 1694 pulverulenta *Sm.* May 19, June 22
 1697 cristifera *Wlk.* May 19, June 18
 1699 lutra *Gn.* June 12, July 1
 1706 montara *Sm.* June 4
 1709 detracta *Wlk.* June 10-28
a neoterica Sm. June 12-23

Lacinipolia McD.

- 1714 lustralis *Grt.* June 18-25
 1716 anguina larissa *Sm.* June 12, July 23
 1735 vicina *Grt.* July 13, Aug. 28
 1736 pensilis *Grt.* July 24, Aug. 16
 1739 stricta cinnabarina *Grt.* Aug. 8-21
 1744 lorea *Gn.* June 10-26
 1746 comis *Grt.* June 18, July 29
a obnigra Sm. June 5 Aug. 25
b rectilinea Sm. July 30

Sideridis Hbn.

- 1800 rosea *Harv.* March 18, June 3
 1802 maryx *Gn.* June 8

Protorthodes McD.

- 1841 curtica *Sm.* Aug. 14-20
 1855 oviduca *Gn.* May 11, June 2

Anhimella McD.

- 1886 contrahens infidelis *Dyar* June 17-21

Nomorthodes McD.

- 1885 hanhami *B. & McD.* June 11

1890 furfurata uniformis *Sm.*

- June 13, July 19

- 1891 communis *Dyar* July 23, Aug. 6

- 1892 fractura mecrona *Sm.* June 2, July 1

Nephelodes Gn.

- 1895 emmedonia pectinata *Sm.*
 June 19, Aug. 20

Xylomyges Gn.

- 1906 hiemalis *Grt.* April 19
 1909 crucialis *Harv.* April 3, May 16
 1913 candida *Sm.* April 23-28
 1914 dolosa *Grt.* April 4, May 14
 1915 rubrica *Harv.* May 1-26
 1916 perlubens *Grt.* April 17, May 12

Stretchia Hy. Edw.

- 1920 plusiaeformis *Hy. Edw.* May 25

Acerra Grt.

- 1923 normalis *Grt.* April 2

Orthosia Ochs.

- 1925 pulchella achsha *Dyar* April 22
 1940 revicta *Morr.* April 30, May 14
 1942 pacifica *Harv.* April 11
 1943 hibisci quinquefasciata *Sm.*
 March 18, May 25

Dargida Wlk.

- 1952 procineta *Grt.* June 22, Sept. 23

Zosteropoda Grt.

- 1955 hirtipes *Grt.* June 13

Leucania Ochs.

- 1977 commoides *Gn.* June 10-26
 1984 fareta roseola *Sm.* June 18, July 20
 1992 insueta heterodoxa *Sm.* June 14-25
 1995 luteopallens *Sm.* June 18, July 31

Subfamily CUCULLINAE

Pleroma Sm.

- 2026 obliquata *Sm.* April 2-4
 2027 tonuscula *Sm.* April 10, May 1
 2029 cinerea *Sm.* Sept. 18, Oct. 9

Cucullia Schrank

- 2041 florea obscurior *Sm.* Aug. 10
 2042 poetera *Gn.* July 1
 2043 ommissa *Dod.* June 7, Aug. 4

Crocecnemis Led.

- 2073 pudorata *Sm.* Aug. 10
 2111 columbia *McD.* Aug. 12
 2116 piffardi *Wlk.* Aug. 17, Oct. 6
 2132 major *Grt.* July 11
 2133 chandleri *Grt.* Aug. 12, Sept. 3

Feralia Grt.

- 2186 comstocki columbiana *Sm.*
 April 28, May 16

Bombycia Steph.

- 2205 rectifascia *Sm.* July 25-Aug. 2

Hillia Grt.

- 2212 maida *Dyar* Aug. 29, Sept. 18

Litholomia Grt.

- 2215 napaea *Mor.* March 3, Nov. 22

Lithomoia Hbn.

- 2216 solidaginis *Hbn.* Aug. 20-28

Graptclitha Hbn.

- 2221 innominata *Sm.* March 18, Sept. 3
 2222 petulca *Grt.* Sept. 14, Oct. 8
 2223 ferrealis *Grt.* Sept. 8-28
 2235 vivida *Dyar* Aug. 18, Oct. 28
 2241 tepida *Grt.* Sept. 17, Oct. 19
 2244 georgii *Grt.* April 19, Sept. 27
b holocinerea Sm. Oct. 23

2248 fagina *Morr.* March 12, Oct. 27
 2253 dilatocula *Sm.* April 26, Oct. 12
Xylena Ochs.
 2260 curvimacula *Morr.* March 17, Sept. 30
 2262 thoracica *Put.-Cram.* Sept. 26, Oct. 11
 2263 cineritia *Grt.* Sept. 19 Oct. 11
Xylotype Hamp.
 2266 acadia *B. & B.* Aug. 28, Sept. 1
Platypolia *Grt.*
 2268 anceps *form* *aplectoides Gn.* Sept. 16-20
 2270 loda *Stkr.* Sept. 8, Oct. 2
Mniotype *Franci.*
 2273 versuta *Sm.* Aug. 1, Sept. 19
 2276 miniota *Sm.* May 8, July 30
Fishia *Grt.*
 2278 evelina hanhami *Sm.* Sept. 8, Oct. 13
 2281 yosemitae *Grt.* Oct. 12-24
Anytus *Grt.*
 2288 profunda *Sm.* Aug. 28, Sept. 17
Eupsilia *Hbn.*
 2303 tristigmata *Grt.* March 3, Oct. 17
 2307 fringata *B. & McD.* Sept. 15, Oct. 13
Parastichtis *Hbn.*
 2309 discivaria *Wlk.* July 29, Aug. 15
Lycanades *Franc.*
 2310 purpurea *Grt.* Aug. 25-30
 a antapica Sm. Sept. 18-26
Rusina *Steph.*
 2313 verberata *Sm.* July 29, Aug. 28
 2315 decipiens *Grt.* Sept. 1-8
Xanthia *Ochs.*
 2316 lutea *Strom.* Aug. 22, Sept. 1
Eucirrhoedia *Grt.*
 2321 pampina *Gn.* Aug. 5, Sept. 2
Homoglaea *Morr.*
 2322 carbonaria *Harv.* March 31, April 18
 2323 dives *Sm.* March 19, Nov. 1
 Subfamily AMPHIPYRINAE
Septis *Hbn.*
 2336 antennata purpurissata *B. & McD.*
 June 16, July 1
 2342 auranticolor *Grt.* June 2
 b sora Sm. July 16-26
 2344 vultuosa *Grt.* Aug. 8-21
 2351 arctica *Frr.* June 18, July 28
 2352 castanea *Grt.* July 14, Aug. 10
 2362 impulsiva *Gn.* July 23
 2365 finitima cerivana *Sm.* May 11, June 16
Agroperina *Hamp.*
 2366 lateritia *Hujn.* June 26, Aug. 1
 2368 dubitans cogitata *Sm.* July 2, Aug. 5
Crymodes *Gn.*
 2375 devastator *Brace* July 29, Aug. 22
 2378 longula *Grt.* July 24-28
Aseptis *McD.*
 2400 binotata *Wlk.* July 20-30
Oligia *Hbn.*
 2413 indirecta *Grt.* June 27, July 31
 2423 illocata *Wlk.* Aug. 25, Sept. 2
 2424 mactata allecto *Sm.* Sept. 3-8
 2557 divesta *Grt.* Aug. 16-21
Eremobina *McD.*
 2430 claudens *Wlk.* Aug. 15, Sept. 8
Ipimorpha *Hbn.*
 2453 pleonectusa *Grt.* July 16, Aug. 12

Helotropha *Led.*
 2457 reniformis *Grt.* Aug. 18, Sept. 6
Euplexia *Steph.*
 2533 benesimilis *McD.* June 15-21
Phlogophora *Tr.*
 2536 periculosa *form v-brunneum Grt.*
 July 31, Aug. 26
Achytonix *McD.*
 2558 epipaschia *Grt.* Aug. 16-17
Amphipyra *Ochs.*
 2584 pyramidoides *Gn.* Aug. 13-17
 2585 tragopoginis *L.* July 20-22
Andropolia *Grt.*
 2602 aedon *Grt.* July 21, Aug. 7
 2603 theodori epichysis *Grt.* July 30, Aug. 16
Hyppa *Dup.*
 2607 xylinooides *Gn.* June 17, July 17
Elaphria *Hbn.*
 2647 festivoides *Gn.* May 16, June 23
Platyperigea *Sm.*
 2656 extima *Wlk.* July 27, Aug. 12
 2657 meralis *Morr.* July 25, Aug. 8
Enargia *Hbn.*
 2685 decolor *Wlk.* Aug. 5, Sept. 6
Pyrrhia *Hbn.*
 2715 umbra exprimens *Wlk.* L
 May 27, June 12
Eutricopis *Morr.*
 2871 nexilis *Morr.* June 23
 Subfamily HELIOTHIINAE
Melicleptria *Hbn.*
 2913 sueta *Grt.* May 22, July 31
 2915 honesta *Grt.* May 23
Dysocnemis *Grt.*
 2920 oregonica *Hy. Edw.* June 26
 Subfamily ACONTIINAE
Erastria *Ochs.*
 3119 albidula *Gn.* May 31, July 5
 Subfamily NYCTEOLIDAE
Nycteola *Hbn.*
 3235 frigidana *Wlk.* Aug. 9-15
 3235a cinereana *N. & D.* April 22, July 4
 Subfamily PLUSIINAE
Syngrapha *Hbn.*
 3254 rectangula nargenta *Ottol.* Aug. 7-14
 3255 celsa *Hy. Ed.* Aug. 8
 3256 angulidens excelsana *Strand* Aug. 14
 3257 alias interalia *Ottol.* June 10
 3264 epigaea *Grt.* Aug. 24, Sept. 6
 3265 ampla *Wlk.* July 7-19
 3266 selecta *Wlk.* July 13, Aug. 26
Anagrapha *McD.*
 3252 falcifera *form simplex Gn.* Aug. 22
Autographa *Hbn.*
 3285 bimaculata *Steph.* Aug. 6
 3286 mappa *G. & R.* Sept. 18
 32 8 californica *Speyer* April 23, Aug. 21
 3292 metallica *Grt.* June 22, Sept. 29
Plusia *Ochs.*
 3295 aereoides *Grt.* July 7
 Subfamily CATOCALINAE
Catocala *Schrank*
 3344 relicta *Wlk.* Aug. 22, Sept. 8
 3355 californica *Edw.* July 28, Aug. 13
 3357 briseis *Edw.* July 25, Oct. 11

- 3360 nevadensis *form montana* *Beut.*
Aug 2-31
- Euclidina** McD.
3426 cuspeida *Hbn.* May 15-25
- Caenurgina** McD.
3427 annexa *Hy. Edw.* May 16
3430 crassiuscula *Haw.* May 7, Aug. 5
- Zale** Hbn.
34 84 minerea norda *Sm.*.... April 17, May 23
3489 benesignata *Harv.* May 19, June 6
- Toxocampa** Gn.
3538 victoria *Grt.* July 28, Aug. 8
- Melipotis** Hbn.
3551 jucunda *Hbn.* May 25, June 2
- Synedoida** Hy. Edw.
3578 adumbrata *Behr.* May 21, July 6
- Scelopteryx** Germ.
3615 libatrix *L.* July 31, Aug. 21
- Subfamily HYPENINAE
- Bomclocha** Hbn.
3690 palparia *Wlk.* June 17
3698 toreuta *Grt.* June 21
- Hypena** Schrank
3706 humuli *Harr.* April 4, Aug. 19
- Subfamily RIVULINAE
- Mycterophora** Hlst.
3711 longipalpa *Hlst.* July 31, Aug. 7
- Rivula** Gn.
3732 propinqualis *Gn.* July 6
- Subfamily HERMINIINAE
- Epizeuxis** Hbn.
3735 aemula *Hbn.* July 8-21
- Chytolita** Grt.
3767 petrealis *Grt.* May 28, June 28
- Philometra** Grt.
3770 metonalis *Wlk.* June 23, July 25
- Bleptina** Gn.
3797 caradrinalis *Gn.* June 24, Sept. 16
- Palthis** Hbn.
3807 angularis *Hbn.* May 16, June 12
- Family NOTODONTIDAE
- Ichthyura** Hbn.
3822 apicalis *Wlk.* May 15, June 18
3827 allosigma specifica *Dyar*
May 11, Aug. 1
- Datana** Wlk.
3829 ministra *Dru* May 21
- Hyperaeschra** Butl.
3844 pacifica *Behr.* May 5
- Odentosa** Hbn.
3847 elegans *Stkr.* July 6
- Nalata** Wlk.
3857 gibbosa oregonensis *Butl.* .. June 9-29
- Schizura** Dbldy.
3920 ipomoeae *Dbldy.* Aug. 6
3921 concinna *A. & S.* May 15, Aug. 9
3924 unicoloris *A. & S.* June 24
- Cerura** Schrank
3938 scolopendrina *Bdv.* June 11
- Gluphisia** Bdv.
3940a scvera *form normalis* *Dyar* ... May 9
- Family LIPARIDAE
- Notolophus** Germ.
3943 antiqua badia *Hy. Edw.* Aug. 22, Oct. 17
- Hemerocampa** Dyar
3945 pseudotsugata *McD.* Aug. 19
- Olene** Hbn.
3954 vagans *B. & McD.* July 1, Aug. 8
- Superfamily BOMBYCOIDEA
Family LASIOCAMPIDAE
- Tolyte** Hbn.
3978 velleda *Stoll* July 6
- Malacosoma** Hbn.
3989 americana *Fabr.* July 3-14
3997 distria *Hbn.* June 27, July 17
- Epicnaptera** Ramb.
3999 americana *Harr.* April 20, May 2
- Superfamily DREPANOIDEA
Family THYATIRIDAE
- Habrosyne** Hbn.
4004 scripta *Gosse.* June 10, July 7
- Pseudothyatira** Grt.
4007 cymatophoroides *Gn.* .. June 12, July 9
form expultrix *Grt.*... June 20, July 21
- Euthyatira** Sm.
4010 pudens *Gn.* April 20, May 19
- Ceraremota** Clarke
4014 tearlei *Hy. Edw.* Sept. 5-12
- Family DREPANIDAE
- Drepana** Schrank
4020 arcuata siculifer *Pack.* April 28, June 6
4021 bilineata *Pack.* May 5, Sept. 1
- Superfamily GEOMETROIDEA
Family GEOMETRIDAE
Subfamily BREPHINAE
- Brephos** Zinck.
4023 infans oregonensis *Sweet*
March 24, April 19
- Subfamily GEOMETRINAE
(Hemitheinae)
- Nemoria** Hbn.
4059 darwiniata *Dyar* June 29, July 24
- Synchlora** Gn.
4074 rubrifrontaria *Pack.* July 7
- Mesothea** Warr.
4090 viridipennata *Hlst.* .. April 11, May 10
- Subfamily STERRHINAE
(Acidaliinae)
- Scelolophia** Hlst.
4127 hepaticaria *Gn.* April 21, May 15
- Scopula** Schrank
4144 quinquelinearia *Pack.* June 8-21
4147 ancellata *Hlst.* July 7 Aug. 3
4157 subfusca *Tayl.* May 16, June 13
- Sterrrha** Hbn.
4180 demissaria columbia *McD.* June 31
4195 rotundopennata *Pack.* June 3-25
- Cosymbia** Hbn.
4211 pendulinaria *Gn.* June 26, July 24
a griseor *McD.* June 29
- Subfamily LARENTIINAE
- Nyctobia** Hlst.
4223 imitaria nigroangulata *Stkr.*
April 17, May 14
- Cladara** Hlst.
4225 atroliturata *Wlk.* April 13, June 1
- Lobophora** Curt.
4228 s.m.cata *Sweet* May 24, June 13

Neodezia Warr.

4235 albovittata tenuifasciata *B. & McD.*
June 4

Cporophtera Hbn.

4239 bruceata *Hlst.* Oct. 21, Nov. 14

Oporinia Hbn.

4243 autumnata henshawi *Swett*
Sept. 5, Oct. 25

Triphosa Steph.

4244 haesitata *Gn.* Sept. 13, Nov. 4
form pustularia Hy Edw.
March 23, Dec. 3

Calocalpe Hbn.

4247 undulata *Linn.* June 1, July 19

Coryphista Hlst.

4248 meadi *Pack.* April 26, July 31
form badiaria Hy. Edw. May 9, July 27

Eupithecia Curt.

4267 misturata *Hlst.* April 10, June 29
4276 castigata *Hbn.* June 10-16
4287 palpata *Pack.* May 5
4288 columbiata *Dyar* May 5, June 5
4290 maestosata *Dyarata Tayl.* June 30, Aug. 8
4321 terminata *Tayl.* June 11
4330 coagulata *Gn.* May 12, Aug. 3
4331 geminata *Pack.* June 26-31
4336 innotata kootenaiata *Dyar* June 7
4341 georgii *McD.* May 24, June 16
4342 sobrinata niphadophilata *Dyar* Aug. 28
4346 annulata *Hlst.* March 18, April 17
4347 usurpata *Pears.* March 28
4350 cretaceata *Pack.* Aug. 14
4358 agnesata *Tayl.* June 7
4363 tenuata *Hlst.* June 22
4383 ravocostaliata *Pack.* May 7-11

Horisme Hbn.

4393 intestinata *Gn.* June 11

Eustroma Hbn.

4398 nubilata *Pack.* May 17, Sept. 7

Lygris Hbn.

4407 xylina *Hlst.* June 20, Aug. 11

Plemyria Hbn.

4412 georgii *Hlst.* Aug. 10, Oct. 15

Dysstroma Hbn.

4416 citrata *Linn.* June 8, Sept. 15
b mulleolata Hlst. June 5-27

Ceratodalia Pack.

4429 gueneata *Pack.* July 16, Aug. 20

Hydriomena Hbn.

4465 furcata *Thun.* June 25, Aug. 9
4477 pluviata *Gn.* June 17, Aug. 16
4485 renunciata *form pernigrata B. & McD.*
June 1-3

Xanthorhoe Hbn.

4515 defensaria *Gn.* April 16, Oct. 13
4516 ferrugata *Clerk.* April 26, May 28
4519 incurcata lagganata *S. & C.* Aug. 4
4524 pontiaria *Tayl.* May 14, June 31

Entephria Hbn.

4541 multivagata *Hlst.* July 4 Sept. 25

Mesoleuca Hbn.

4546 ruficillata *Gn.* May 16-18
4547 gratulata latialbata *B. & McD.*
April 19, May 2

Epirrhoe Hbn.

4548 tristata *Linn.* May 23
4549 plebeculata *Gn.* May 25
4551 alternata *Mull.* May 22, July 25

Spargania Gn.

4555 magnoliata pernotata *Hlst.*
June 8, Aug. 7

Euphyia Hbn.

4558 unangulata intermediata *Gn.* June 26
4561 multiferrata *Wlk.* May 20

Eulype Hbn.

4573 hastata *Linn.* May 21, July 2

Perizoma Hbn.

4581 curvilinea *Hlst.* May 19, June 13

Eaerophila Gumpb.

4587 vasiliata *Gn.* April 9 May 25

Venusia Curt.

4593 pearsalli *Dyar* April 17, May 20

Hydrelia Hbn.

4597 albifera *Wlk.* July 1

Subfamily ENNOMINAE

Bapta Steph.

4605 semiclarata *Wlk.* April 28, May 16

Deilinia Hbn.

4612 variolaria *Gn.* June 13, Sept. 5
4614 erythemaria *Gn.* May 23

Drepanulatrix Gump.

4617 rectifascia *Hlst.* May 16, Aug. 8
4618 bifilata *Hlst.* March 20, July 3
4622 falcataria *Pack.* April 27, May 13
4628 pulveraria *Hlst.* May 2-15
4630 litaria *Hlst.* April 4, Sept. 21
4634 unicalcararia *Gn.* June 20, Aug. 12

Sericosema Warr.

4645 juturnaria *Gn.* June 20, July 16

Isturgia Hbn.

4658 truncataria *Wlk.* May 11-30

Philobia Dup.

4664 ulsterata *Pears* May 23, July 12

Semiothisa Hbn.

4675 adonis *B. & McD.* July 1
4680 granitata *Gn.* May 31, Aug. 26
4688 denticulata *Grt.* May 25 July 5
4725 neptaria sinuata *Pack.* .. May 6, Aug. 5

Itame Hbn.

4757 quadrilineararia *Pack.* .. June 28, Aug. 28
4762 exauspicata *Wlk.* July 4-31
4768 plumosata *B. & McD.* .. July 9, Aug. 12
4771 bitactata *Wlk.* Aug. 13
4772 denticulodes *Hlst.* July 16
4782 matilda *Dyar* May 25, June 26
4784 hulstaria *Tayl.* June 3, Aug. 31

Elpiste Gump.

4799 lorquinaria *Gn.* July 16, Aug. 28

Hesperumia Pack.

4801 sulphuraria *Pack.* June 19, July 30
form baltearia Hlst. June 28

Dasyfidonia Pack.

4806 avuncularia *Gn.* May 23

Paraphia Gn.

4809 subatomaria *Wood* June 12, July 4

Melanolophia Hlst.

4859 imitata *Wlk.* May 2, June 15

Protoarmia McD.

4875 porcelaria indicataria *Wlk.*
May 10, July 29

Stenoporpi McD.

4900 excelsaria *Stkr.* May 31
4905 satisfacta *B. & McD.* .. July 24, Aug. 26

- Vitrinella** McD.
4908 pampinaria *Gn.* May 16, June 10
- Anacamptodes** McD.
4913 emasculata *Dyar* May 17, June 21
- Aethalura** McD.
4945 anticaria fumata *B. & McD.*
April 11, June 7
- Ectropis** Hbn.
4946 crepuscularia *Schiff.* April 10 May 24
- Coniodes** Hlst.
4955 plumogeraria *Hlst.* March 23
- Erannis** Hbn.
4963 vancouverensis *Hlst.* Oct. 3-16
- Lycia** Hbn.
4966 ursaria *Wlk.* April 6, May 26
- Amphidasis** Tr.
4968 cognataria *Gn.* June 11, July 11
- Euchlaena** Hbn.
4997 johnsonaria *Fitch* July 25, Aug. 11
4998 mollisaria *Hlst.* July 23-31
5001 astylusaria *Wlk.* June 11
5005 tigrinaria *Gn.* June 7-28
- Spodolepis** Hlst.
5012 substriataria danbyi *Hlst.*
April 9, May 19
- Campaea** Lam.
5015 perlata *Gn.* June 21, July 17
- Anthelia** Hlst.
5019 taylorata *Hlst.* May 15
- Philedia** Hlst.
5027 punctomacularia *Hlst.* Aug. 11, Sept. 18
- Plagodis** Hbn.
5034 approximaria *Dyar* July 27
- Anagoga** Hbn.
5042 pulveraria *Linn.* May 8-29
- Hyperetis** Gn.
5043 amicaria *H.-S.* May 16, June 26
- Nematocampa** Gn.
5044 limbata *Haw.* July 22, Aug. 24
- Metarranthis** Warr.
5050 duarria *Gn.* May 16, June 7
- Metanema** Gn.
5054 inatomaria *Gn.* June 20
- Pero** H. -S.
5073 giganteus *Grossb.* Aug. 6-8
5080 morrisonarius *Hy. Edw.* May 19 June 8
- Phengommataea** Hlst.
5083 edwardsata *Hlst.* Aug. 8-10
- Enypia** Hlst.
5091 perangulata *Hlst.* Aug. 10-11
5095 packardata *Tayl.* Aug. 11
- Nepytia** Hlst.
5111 semiclusaria pellucidaria *Pack.*
Sept. 11, Oct. 9
- Caripeta** Wlk.
5125 divisata *Wlk.* July 4-17
- Besma** Capps
5145 quercivoraria *Gn.* May 27, July 25
- Lambdina** Capps
5146 fiscellaria lugubrosa *Hlst.*
Aug. 24, Sept. 15
- Neoterpes** Hlst.
5158 trianguliferata *Pack.* May 14, June 27
- Sicya** Gn.
5161 macularia *Harr.* June 21, July 21
- Deuteronomos** Prout
5170 magnarius *Gn.* Sept. 11-21
- Synaxis** Hlst.
5189 jubararia *Hlst.* Sept. 17, Oct. 20
5191 cervinaria *Pack.* June 7
- Tetracis** Gn.
5198 lorata *Grt.* May 16-23
- Prochoerodes** Grt.
5210 forficaria combinata *McD.*
June 10, July 3

Superfamily URANIOIDEA
Family EPIPLEMIDAE

- Callizzia** Pack.
5223 amorata *Pack.* June 10

MICROLEPIDOPTERA

Superfamily ZYGAENOIDEA
Family LIMACODIDAE

- Tortricidia** Pack.
5279 testacea crypta *Dyar* .. May 13, June 28

Superfamily PYRALIDOIDEA
Family PYRALIDAE
Subfamily GLAPHYRIINAE

- Egesta** Rag.
5338 eripalis *Grt.* July 7-21

Subfamily PYRAUSTINAE

- Sameodes** Snell.
5427 elealis *Wlk.* April 20
- Evergestis** Hbn.
5436 subterminalis *B. & McD.* Aug. 8
5438 simulatalis *Grt.* Aug. 9-20
- Nomophila** Hbn.
5455 noctuella *D. & S.* May 5
- Loxostege** Hbn.
5462 chortalis *Grt.* May 10, June 14
5478 sticticalis *Linn* May 31, Aug. 26

Perispasta Zell.

- 5545 caeculalis *Zell.* June 10-24

Phlyctaenia Hbn.

- 5553 itysalis *Wlk.* Aug. 12, Sept. 18
5564 tertialis *Gn.* June 6, July 10

Pyrausta Schrank

- 5598 fumalis *Gn.* July 23, Aug. 21
5602 fumoferalis *Hlst.* May 21, June 3
5607 unifascialis *Pack.* June 18-26
5609 fodinalis *Led.* June 2, July 7
5621 borealis *Pack.* May 23, June 13
5622 subsequalis *Gn.* May 5, June 27
5625 ochosalis *Dyar* June 5
5633 signatalis *Wlk.* June 17-24
5647 funebris *Strom.* May 31, June 19

Subfamily SCOPARIINAE

Scoparia Haw.

- 5728 tricoloralis *Dyar* July 21
5730 rectilinea *Zell* July 29, Aug. 10
5747 basalis *Wlk.* June 26, July 29

Subfamily PYRALINAE

Pyralis Linn.

5758 *farinalis* Linn. June 6, July 31

Subfamily CRAMBINAE

Crambus Fabr.

5857 *pascuellus* Linn. June 14, July 5

5861 *leachellus* Zinck Aug. 10-28

5863 *praefectellus* Zinck. May 7, June 5

5864 *carpenterellus* ? Pack. Aug. 21

5878 *myellus* Hbn. July 22, Aug. 16

5883 *hortuellus* Hbn. Aug. 18-23

5887 *innatellus* Wlk. June 27, Aug. 10

5892 *vulgivagellus* Clem. Aug. 9-24

5893 *plumbifimbriellus* Dyar June 28, Aug. 2

5911 *murellus* Dyar May 23, June 20

5915 *nevadellus* Kft. May 11, Sept. 21

5919 *trisectus* Wlk. July 8, Aug. 14

Thaumatopsis Morr.

5942 *repandus* ? Grt. Aug. 22

— 1 *undetermined* sp. Sept. 8

Subfamily EPIPASCHIINAE

Tetralopa Zell.

6042 *aplastella* Hlst. July 7, Aug. 16

— 1 *undetermined* sp. July 7, Aug. 16

Subfamily PHYCITINAE

— 1 *undetermined* sp. June 11-18

Myelois Hbn.

6063 *obnupsella* Hlst. May 24

Acrobasis Zell.

— 1 *undetermined* sp. July 28

Dicryctria Zell.

6129 *near abietella* D. & S. July 30

6130 *ponderosae* ? Dyar Aug. 9

6131 *rendiculella* Grt. Aug. 10

Ambesa Grt.

6156 *laetella* Grt. June 17, July 21

Nephopteryx Hbn.

6163 *ovalis* Pack. June 28, July 21

6167 *fasciolalis* Hlst. Aug. 3

Meroptera Grt.

6185 *nebulella* Riley June 26

Laodamia Rag.

6227 *fusca* Haw May 24, July 25

Pyla Grt.

6235 *scintillans* Grt. June 17-26

Epischnia Hbn.

6254 *albocostalis* Hlst. .. May 23, June 17

Zophodia Hbn.

6303 *grossulariae* Riley ... April 11, May 16

Euzophera Zell.

6318 *ochifrontella* Zell. July 24

Vitula Rag.

6324 *serratilineella* Rag. .. April 13, Sept. 30

Valdivia Rag.

— 1 *undetermined* sp. May 23

Homocosoma Curt.

6370 *mucidellum* ? Rag. June 23

Ephesiodes Rag.

6379 *gilvescentella* Rag. June 1, July 15

6380 *near infimella* Rag. July 15

Ephestia Gn.

6399 *kuehniella* Zell. Sept. 9

— 1 *undetermined* sp. June 22

Family PTEROPHORIDAE

Pterophorus Geoff.

6471 *delawaricus* Zell. July 3-24

Platyptilia Hbn.

6473 *fuscicornis* Zell. Aug. 13

6474 *tesseradactyla* Linn. June 1-20

6476 *pallidactyla* Haw. June 1-18

6477 *carduidactyla* Riley .. May 18, Sept. 22

6482 *albertae* B. & L. July 31, Aug. 14

6484 *punctidactyla* Haw. .. March 30, July 24

6490 *edwardsii* Fish June 2, Aug. 14

6491 *albiciliata* Wlsh. Aug. 14

6495 *orthocarpi* Wlsh. June 15, Aug. 4

6496 *fragilis* Wlsh. Aug. 14

6498 *near maea* B. & L. May 22

Oidaematophorus Wallen.

6523 *occidentalis* Wlsh. July 10, Aug. 2

6561 *homodactylus* Wlk. .. June 26, July 18

6563 *stramineus* Wlsh. July 5

6578 *corvus* B. & L. May 5-26

6588 *monodactylus* Linn. Oct. 20

Family ALUCITIDAE

Alucita Linn.

6591 *huebneri* Wallen. March 3

Superfamily TORTRICOIDEA

Family OLETHREUTIDAE

Subfamily OLETHREUTINAE

Badebecia Heinr.

6654 *urticana* Hbn. June 3, July 20

Exartema Clem.

6678 *quadridum* Zell. June 6

— 1 *undetermined* sp. June 29

Olethreutes Hbn.

6716 *albiciliana* Fern. June 18

6719 *galaxana* Kft. June 18-23

6721 *astrologana coronana* Kft. May 5,

June 18

6723 *puncticostana major* Wlsh. .. June 7

6728 *cespitana* Hbn. May 5, Aug. 6

6731 *glaciana* Moesch. June 18, July 12

6742 *buckellana* McD. June 11-23

Subfamily EUCOSMINAE

Thiodia Hbn.

6773 *awemeana* Kft. May 8

6778 *formosana* Clem. May 27

6810 *rupestrana* McD. May 12, June 20

6829 *striatana* Clem. May 22-29

6841 *infimbriana* Dyar July 31

Eucosma Hbn.

6870 *ridingsana* Rob. Aug. 1

6894 *pergandeanana* Fern. ... May 23, June 12

6918 *subflavana* Wlsh. June 20

6972 *dorsisignatana* Clem. .. Aug. 27, Sept. 11

6974 *juncticiliana* Wlsh. June 26

7004 *cataclystiana* Wlk. June 10-28

Epiblema Hbn.

7042 *illotana* Wlsh. June 9-22

7043 *culminana* Wlsh. July 21

7047 *abbreviatana* Wlsh. .. May 15, June 20

Gypsonoma Meyr.

7058 *fasciolana* Clem. May 20, June 13

Pseudexentera Heinr.

7078 *improbana oregonana* Wlsh. ..

March 7, April 28

Rhopobota Led.

7105 *naevana* Hbn. June 25, July 13

Epinotia Hbn.

- 7109 solandriana Linn. Aug. 6-10
 7115 johnsonana Kft. May 17
 7130 sollicitana Wlk. May 22
 7132 nisella Clerck June 20, Aug. 13
 7135 transmissana Wlk. July 20-26
 7148 emarginana Wlsh. June 20
 7149 crenana forms Oct. 23, Feb. 14
 7165 medioplagata Wlsh. June 20
 7167 cruciana Linn. June 22
 7170 seorsa Heinr. Sept. 14, Oct. 26

Anchylopera Steph.

- 7175 nubeculana Clem. June 20
 7178 discigerana Wlk. May 13, July 16
 7184 burgessiana Zell. Aug. 17

Ancylis Hbn.

- 7193 comptana Froh. May 19
 7201 unguicella Linn. May 3-15
 7203 mediofasciana Clem. April 18, May 28

Hystericophora Wlsh.

- 7209 stygiana Dyar July 31, Aug. 5

Subfamily LASPEYRESIINAE

- 1 *undetermined* sp. June 29

Dichrorampha Gn.

- 7219 kana Busck Aug. 1-4
 7221 britana Busck May 29, June 17
 7229 sedatana Busck May 24

Grapholitha Treit.

- 7245 prunivora Walsh. July 1, Aug. 11
 7252 lunatana Wlsh. May 8

Laspeyresia Hbn.

- 7275 populana Busck July 7
 7274 prosperana Kft. May 23

Carpocapsa Treit

- 7301 pomonella Linn. July 15, Aug. 12

Family TORTRICIDAE

Sparganothis Hbn.

- 7333 irrorea Rob. June 19, July 20
 7336 violaceana Rob. June 2

Platynota Clem.

- 7369 idaeusalis Wlk. June 22, July 11

Archips Hbn.

- 7378 persicana Fitch June 18, July 9
 7384 cerasivorana Fitch June 22, July 7
 7388 argyrospila Wlk. July 23-28
 7405 rosaceana Harris June 17, July 3
 7407 conflictana Wlk. July 3
 7408 fumiferana Clem. July 12, Aug. 20

Tortrix Linn.

- 7410 pallorana Rob. July 1-20
 7415 alleniana Fern. June 15, July 12
 7417 lomomana Kft. Sept. 26
 7420 peritana Clem. July 3, Aug. 3
 7439 afflicta Wlk. May 5-30

Eulia Hbn.

- 7442 ministrana Linn. May 5, June 6

Cnephasia Curt.

- 7458 osseana Scop. Aug. 6, Sept. 2
 7459 argentana Cl. June 11-13
 7462 ednana Kft. July 8

Argyrotoxa Steph.

- 7469 albicomana Clem. July 12-30

Acleris Hub.

- 7473 fishiana Fern. Sept. 26
 7476 maximana B. & B. Aug. 28, Oct. 28
 7479 schalleriana Linn. Sept. 19

- 7481 variana Fern. Sept. 1
 7485 celiana Rob. Oct. 15
 7493 brittania Kft. Sept. 5
 7494 fragariana Kft. Sept. 26
 7495 inana Rob. May 1
 7497 maculidorsana Clem. Aug. 12
 7501 bowmanana McD. Oct. 19
 7514 semiannula Rob. March 22, Oct. 30

Family PHALONIIDAE

Phalonia Hbn.

- 2 *undetermined* spp. June 15, July 5
 7530 deutschiana Zett. July 30
 7539 angustana Clem. June 8
 7555 near voxcana Kft. July 2
 7584 albidana Wlk. June 6

Pharmacis Hbn.

- 7608 vitellinana Zell. May 27, June 17

Hysterosia Steph.

- 7615 cartwrightana Kft. June 14

Family CARPOSINIDAE

Bondia Newm.

- 7624 crescentella Wlsh. April 19, May 22

Family COSSIDAE

Prionoxystus Grt.

- 7670 robiniae Peck July 13

Superfamily GELECHIOIDEA
Family COSMOPTERYGIDAE

- 2 *undetermined* spp. April 7-30

Cyphophora H.S.

- 7738 tricristatella Cham. Aug. 25

Walshia Clem.

- 7743 amorphella Clem. Aug. 13

Mompha Hbn.

- 7758 unifasciella ? Cham. May 15

Family GELECHIIDAE

- 10 *undetermined* spp.

Recurvaria Haw.

- 1 *undetermined* sp. April 26, July 12

Gelechia Hbn.

- 79.0 lugubrella Fabr. July 11
 7998 near mandella Busck .. June 30, July 7
 8020 mediofuscella Clem. May 19

Duvita Busck

- 8258 nigratomella Clem. June 11-13

Compsolechia Meyr.

- 8272 niveopulvella Cham. July 21

Family OECOPHORIDAE

Schiffermulleria Hbn.

- 8364 dimidiella Wlsh. May 14, June 30

Hofmannophila Spuler

- 8376 pseudospretella Staint. July 14

Depressaria Haw.

- 1 *undetermined* sp. June 25

Agonopterix Hbn.

- 1 *undetermined* sp. May 5, Oct. 10
 8431 rosaciniella Busck March 16-23
 a echinopanicis ? Clarke Jan. 14-28
 8435 klamathiana Wlsh. March 2, May 10

Semioscopis Hbn.

- 8460 inornata Wlsh. March 31, May 5
 8461 megamicrella Dyar April 11-28

Family BLASTOBASIDAE

- 4 *undetermined* spp.

Family ETHMIIDAE

- Ethmia** Hbn.
8612 *monticola* *Wlsh.* May 2-23
Eumeyrickia Busck
8390 *trimaculella* *Fitch* June 9-29

Superfamily YPONOMEUTOIDEA
Family GLYPHIPTERYGIDAE

- Allononyma** Busck
8645 *vicarialis* *Zell.* Aug. 14
Choreutis Hbn.
8664 *balsamorhizella* *Busck* June 5-18
Ellabella Busck
8680 *editha* *Busck* June 8

Family AEGERIIDAE

- Bembecia** Hbn.
8684 *marginata* *Harr.* Aug. 4-13
Albuna Hy. Edw.
8789 *pyramidalis* *Wlk.* June 13-21

Family PLUTELLIDAE

- Trachoma** Wall.
8842 *falciferella* *Wlsh.* March 13, April 20
Harpiteryx Hbn.
8845 *dentiferella* *form canariella* *Wlsh.*
Aug. 29

- Cerostoma** Latr.
— 1 *undetermined sp.* March 30
8847 *rubrella* *Dyar* March 15, April 14
8853 *near radiatella* *Don.* Jan. 14
— *radiatella forms?* March 13, April 19

- Plutella** Schr.
8875 *interrupta* *Wlsh.* May 4
8878 *maculipennis* *Curt.* Aug. 10

Family SCYTHRIDAE

- Scythris** Hbn.
8964 *magnatella?* *Busck* Aug. 12

Superfamily TINEOIDEA
Family COLEOPHORIDAE

- Coleophora** Hbn.
9092 *coruscipennella* *Clem.* June 3

Family GRACILLARIIDAE

- Parectopa** Clem.
— 1 *undetermined sp.?* April 28
Gracillaria Haw.
— *pulchella* *Cham. group.* May 3-16

Family TINEIDAE

- Tinea** Linn.
9644 *near irrepta* *Braun* June 27

Superfamily INCURVARIOIDEA
Family INCURVARIIDAE

- Lampronia** Steph.
9800 *piperella* *Busck* April 26, May 19
9803 *sublustris* *Braun* May 4-10

- Chalceopla** Braun
— 1 *undetermined sp.* May 11, June 16

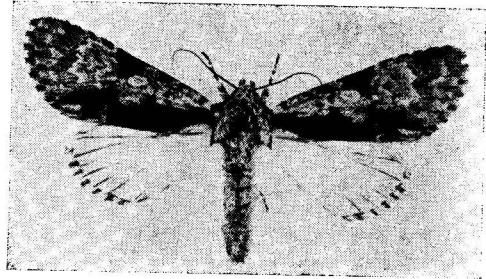
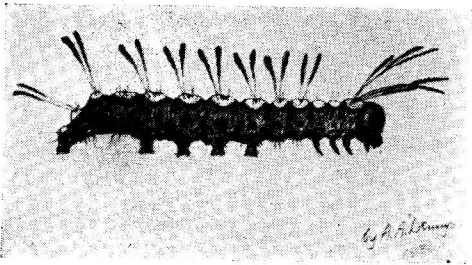
Suborder JUGATAE

Family ERIOCRANIIDAE

- Mnemonica** Meyr.
9853 *aurosparsella* *Wlsh.* July 25

Family HEPIALIDAE

- Sthenopis** Pack.
9859 *purpurascens* *Pack.* July 5, Aug. 6
Hepialus Fabr.
9868 *mathewi* *Hy. Edw.* Sept. 20



Acronicta funeralis G. and R. Mature larva from a specimen found on willow at Vernon, B.C., August, 1935, and drawn

by the late Alex Dennys. Adult emerged May, 1936. From a photograph by A. A. Dennys.

REVISION OF CHECK LIST OF MACROLEPIDOPTERA OF B.C.—Any information intended to be included in this revision should be sent direct to J. R. J. LLEWELLYN JONES, "ARRANMORE," R.M.D. No. 1, COBBLE HILL, B.C., as soon as convenient. Records of localities (not previously reported), larval food

plants and period of the year when imagines may be obtained, will be welcome. It is hoped to make the list as comprehensive and informative as possible. Any new records (if authentic), of species appearing in the Province will be especially welcome.